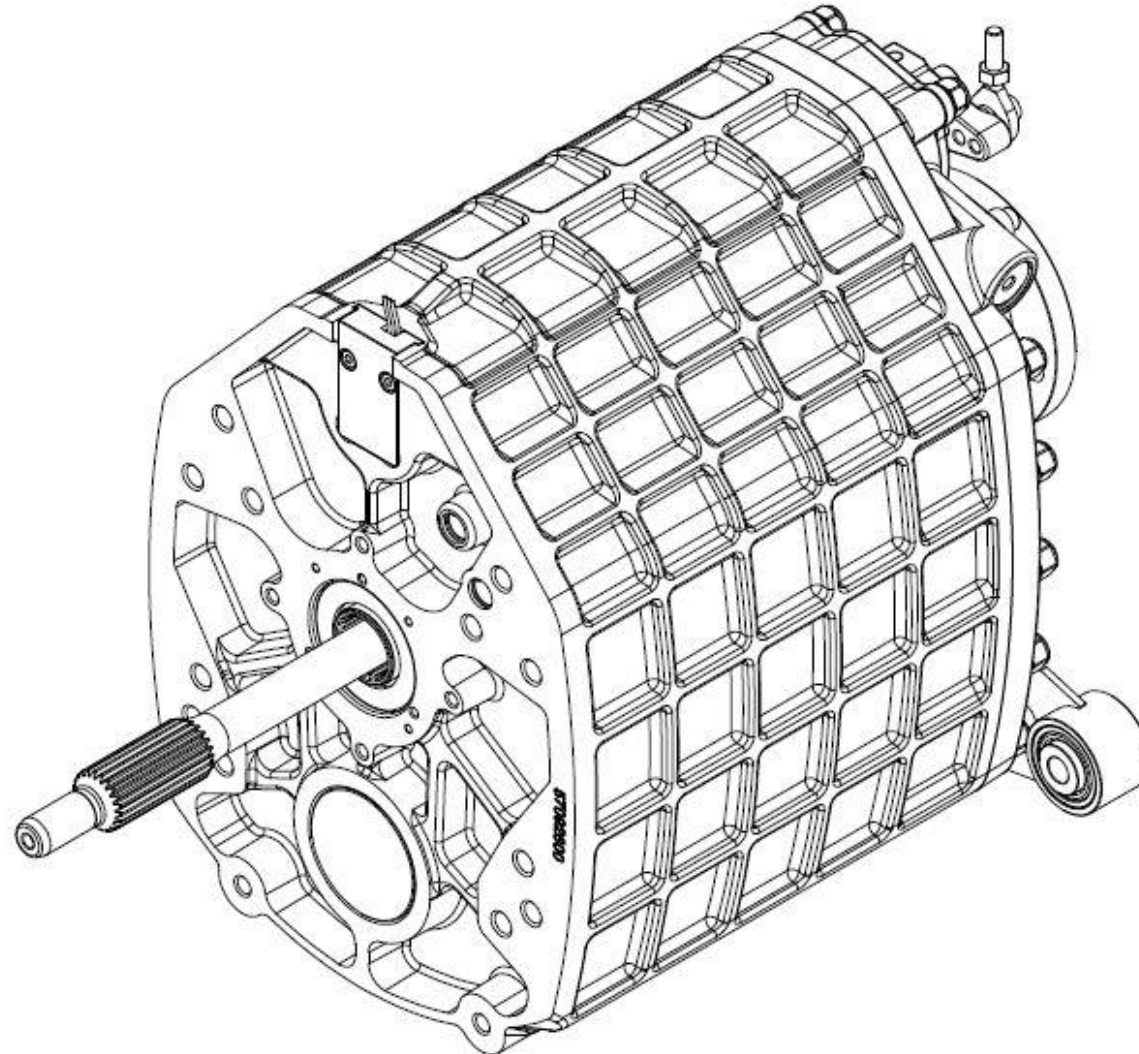


RDT175 ASSEMBLY



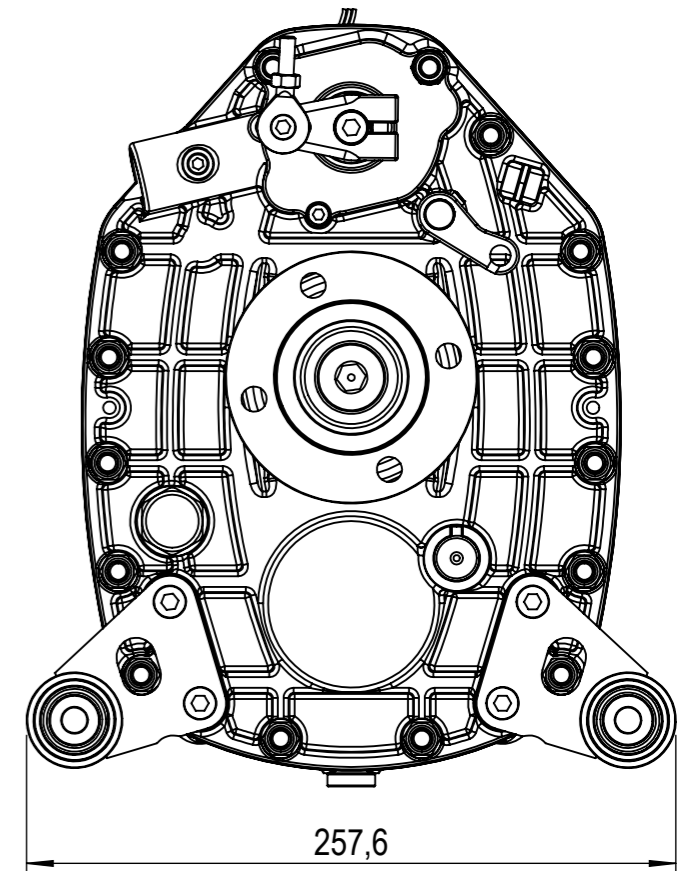
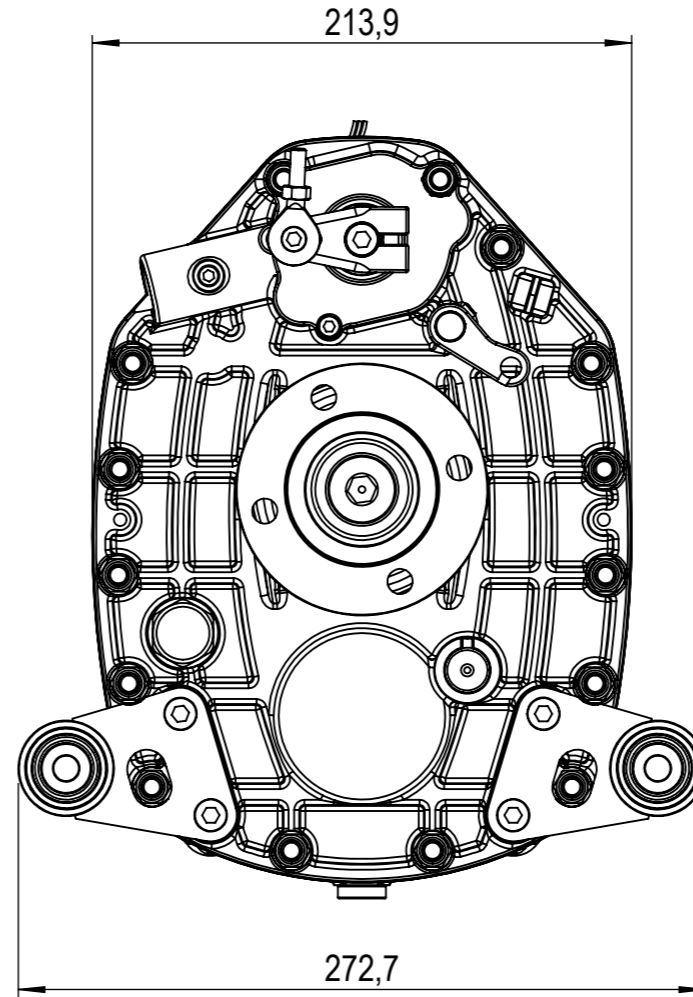
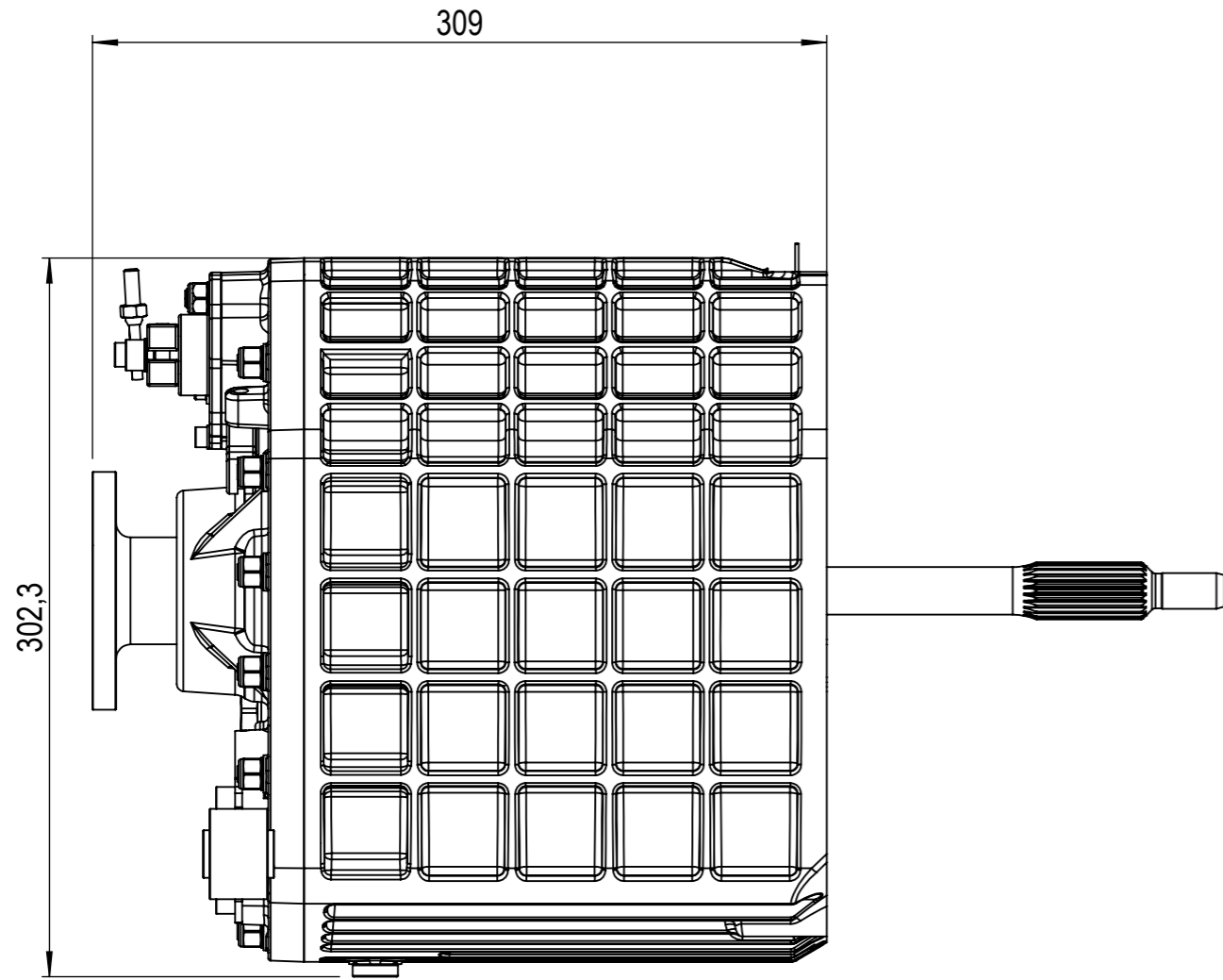


RDT175

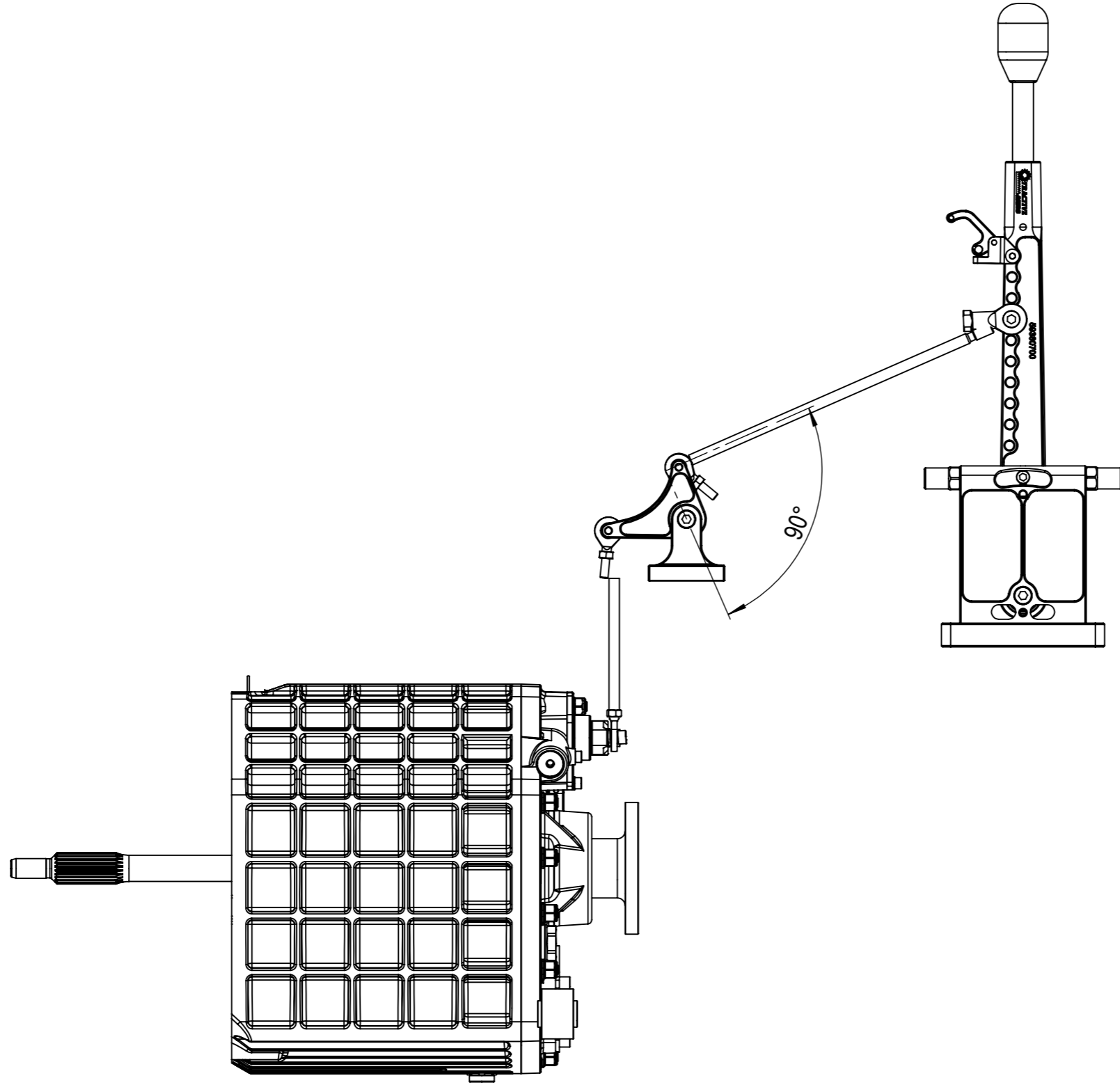
TABLE OF CONTENTS

1. Front page (rdt175 table of contents.docx)
2. Table of contents (rdt175table of contents.docx)
3. RDT175 outside dimensions (Drawing no. A0600003)
4. Gear lever mounting instructions (Drawing no. A0600003)
5. RDT175 section views (Drawing no. A0600003)
6. RDT175 assembly (Drawing no. A0600003)
7. RDT output flanges (Drawing no. A3900003)
8. Rear cover assembly, RDT (Drawing no. A5800035)
9. Reverse release axle, RDT assembly (Drawing no. A5900016)
10. Detent plunger assembly (Drawing no. A5900002)
11. Ratchet axle assembly RDT (Drawing no. A5900015)
12. Ratchet axle assembly RDT section view (Drawing no. A5900015)
13. RDT175 main shaft assembly (Drawing no. A3400048)
14. RDT175 input shaft assembly (Drawing no. A3400049)
15. Clutch shaft options RDT (Drawing no. A3400057)
16. RDT175 housing assembly (Drawing no. A5700018)
17. RDT175 housing options (Drawing no. A5700047)
18. RDT175 guide ring options (Drawing no. A26000)
19. Rear mount assembly RDT(Drawing no. 43261701)
20. RDT175 selector barrel assembly (Drawing no. A5900014)
21. Selector barrel alignment RDT (Drawing no. A5900025)
22. Gear lever assembly (Drawing no. A5900012)
23. RD gear lever options (Drawing no. A5900024)
24. Gear lever RD standard complete (Drawing no. 59400201)
25. Gear lever RD short complete (Drawing no. 59400301)
26. Unlock lever (Drawing no. 59381101)
27. Bracket with linkage quadrant (Drawing no. 59170501)
28. Bell crank assembly (Drawing no. 59170401)
29. Unlock cable (Drawing no. A5300006)
30. Unlock cable optional (Drawing no. A5300007)
31. Weld plate options (Drawing no. A5900020)


Rev.	Note	Date	Rev. By	Appr. By
A	New Document	2020-09-15	JT	JT



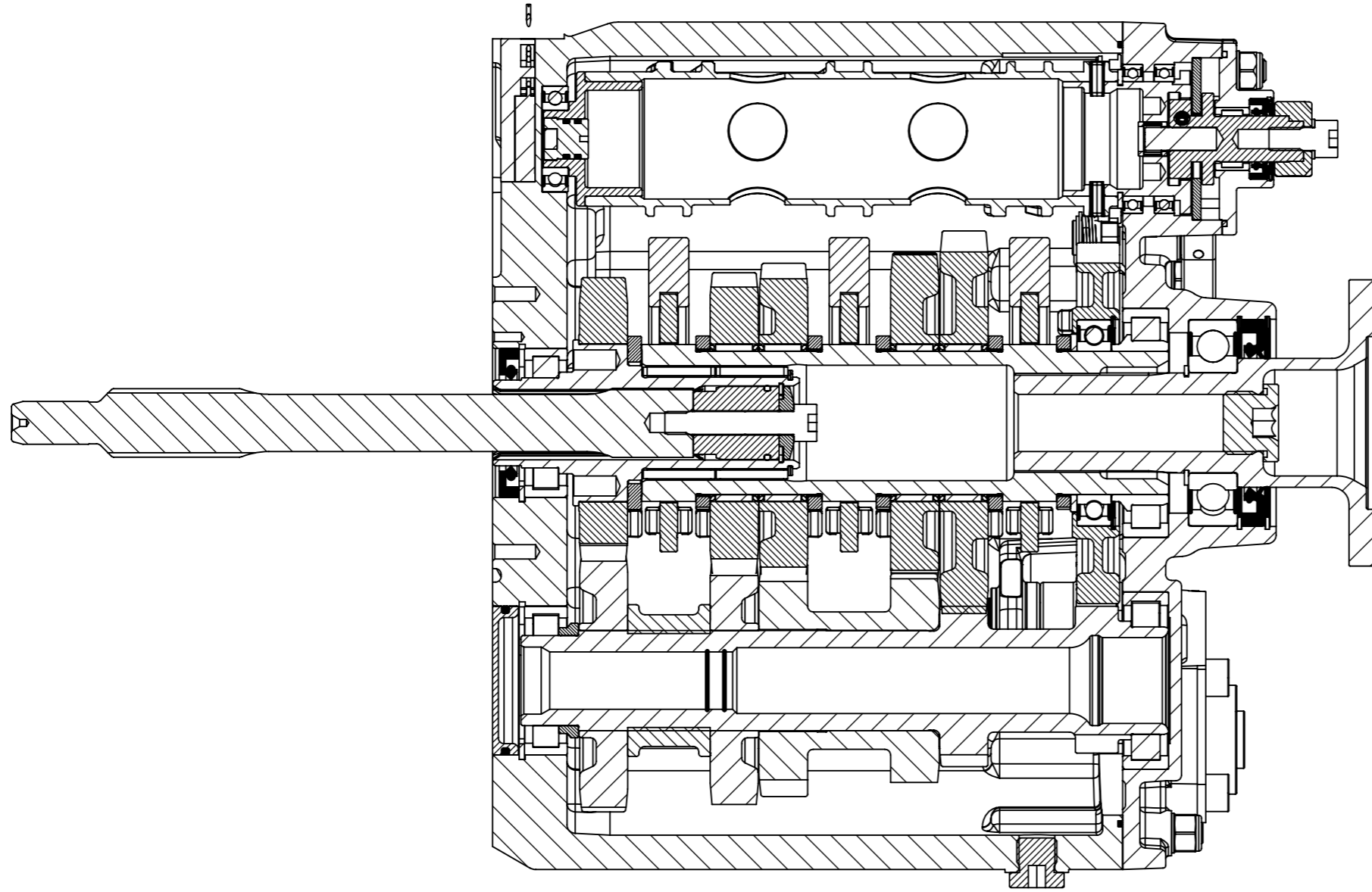
Material	Proj	Scale	Units	Mass, gram	Geometric tolerances	This drawing defines the requirements of the finished (complete) part(s), if not stated otherwise	
		1:3	mm / g				
Approved and released by		Beskrivning					
Checked by	J.Thide	2020-09-15	Description	RDT175 Assembly			
Drawn by	J.Thide	2019-05-21	TRACTIVE	Sheet	Part and drawing number	Category	Revision
Designed by	JThide		Gjutargatan 54 S-781 70 Borlänge - Sweden	1/4	RDT 175		A



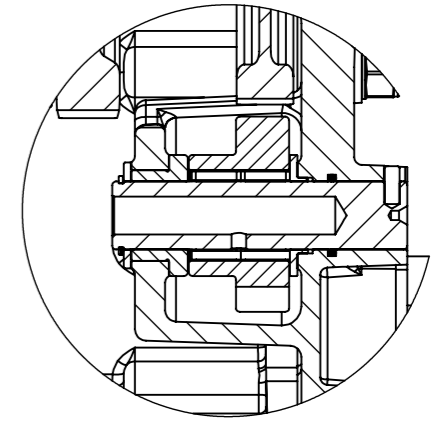
Rev.	Note	Date	Rev. By	Appr. By
A	New Document	2020-09-15	JT	JT

Material	Proj	Scale	Units	Mass, gram	Geometric tolerances	This drawing defines the requirements of the finished (complete) part(s), if not stated otherwise	
		1:4	mm / g				
Approved and released by	Beskrivning						
Checked by	J.Thide	2020-09-15	Description RDT175 Assembly				
Drawn by	J.Thide	2019-05-21	Sheet 2/4		Part and drawing number RDT 175		Category Revision A
Designed by	JThide	 Gjutargatan 54 S-781 70 Borlänge - Sweden					

Rev.	Note	Date	Rev. By	Appr. By
A	New Document	2020-09-15	JT	JT



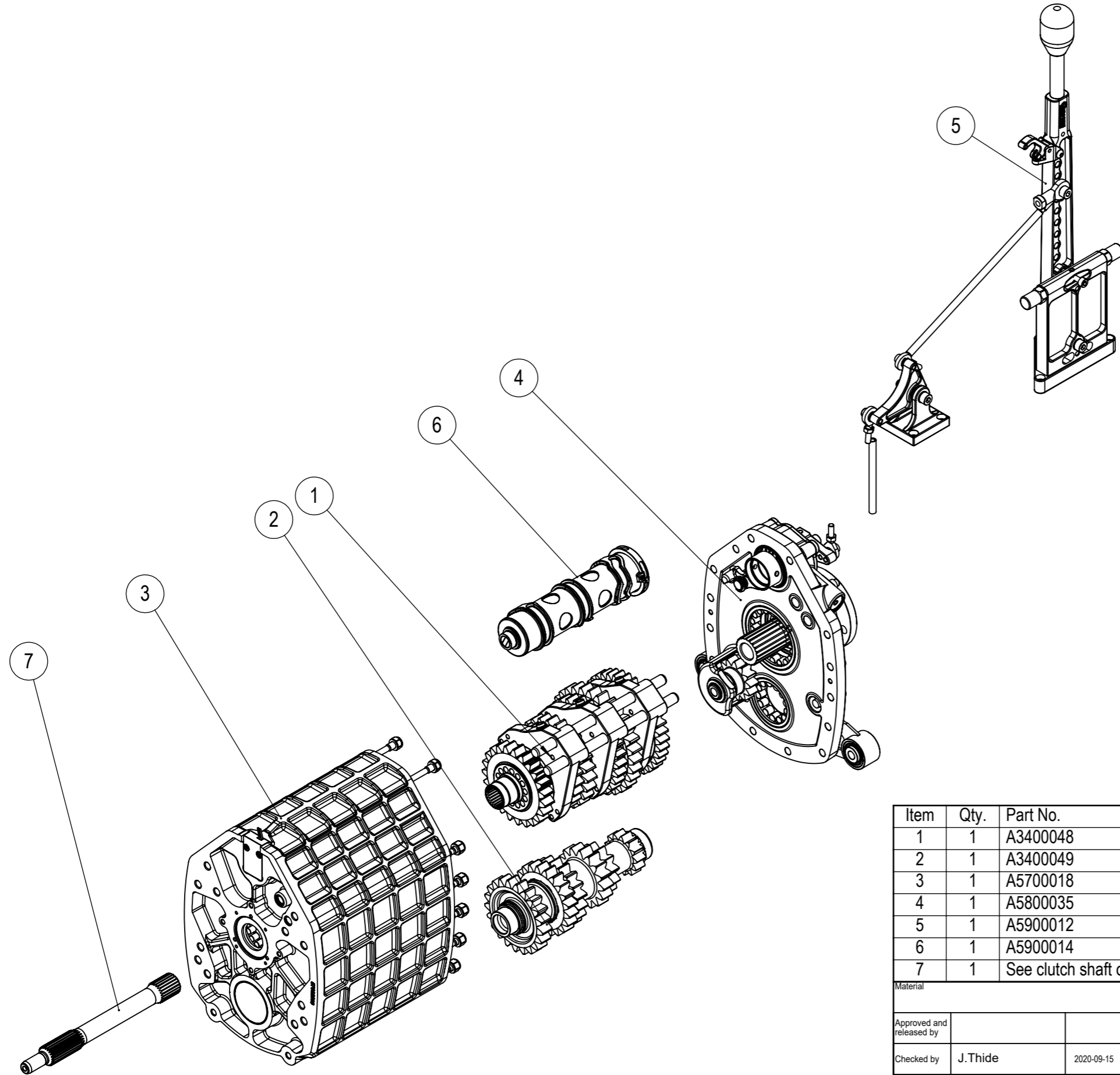
SECTION A-A



DETAIL B
SCALE 1 : 2

Material	Proj	Scale	Units	Mass, gram	Geometric tolerances	This drawing defines the requirements of the finished (complete) part(s), if not stated otherwise			
Approved and released by		1:2	mm / g						
Checked by	J.Thide	2020-09-15	Description RDT175 Assembly						
Drawn by	J.Thide	2019-05-21	Sheet		Part and drawing number		Category	Revision	
Designed by	JThide			3/4	RDT 175			A	
		Gjutargatan 54 S-781 70 Borlänge - Sweden							

Rev.	Note	Date	Rev. By	Appr. By
A	New Document	2020-09-15	JT	JT

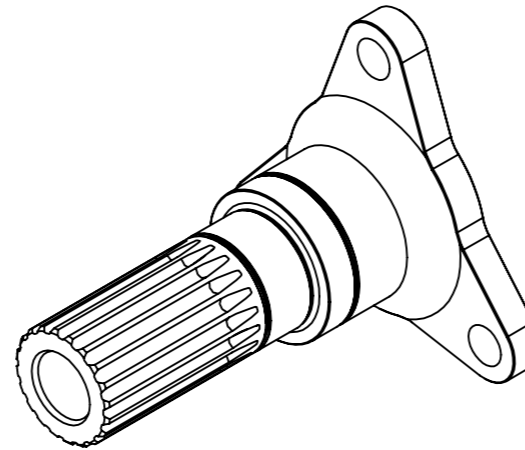
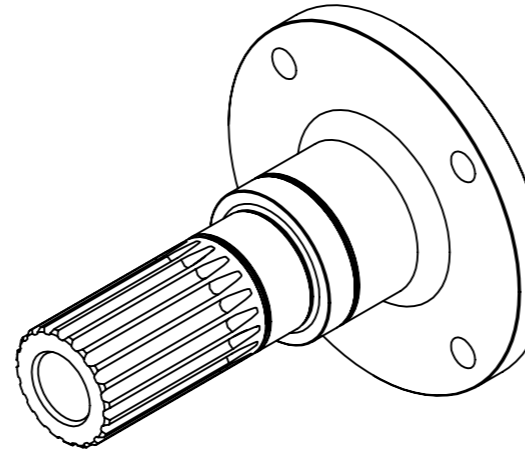
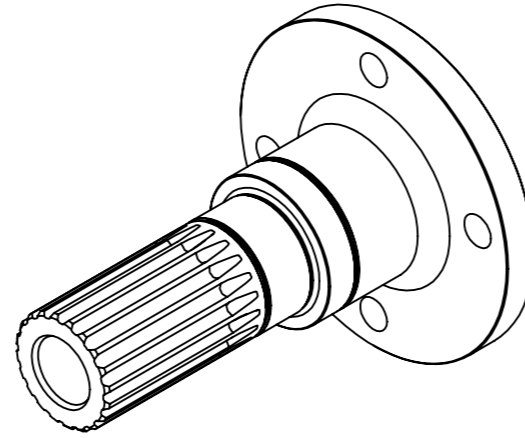
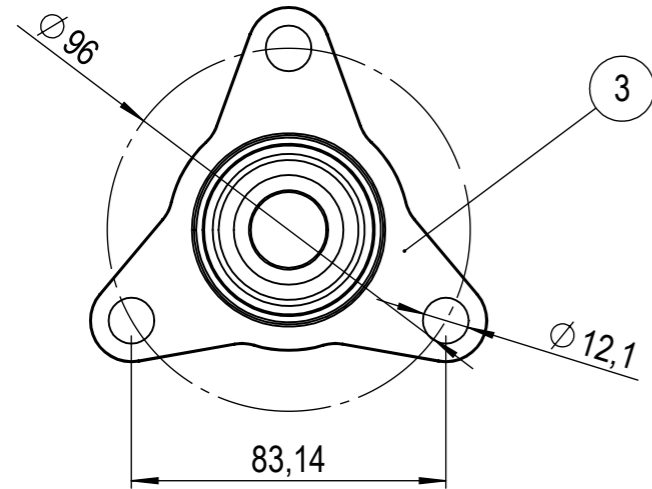
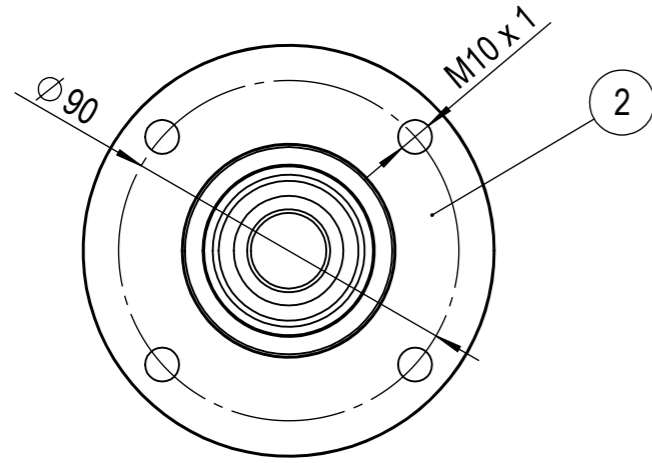
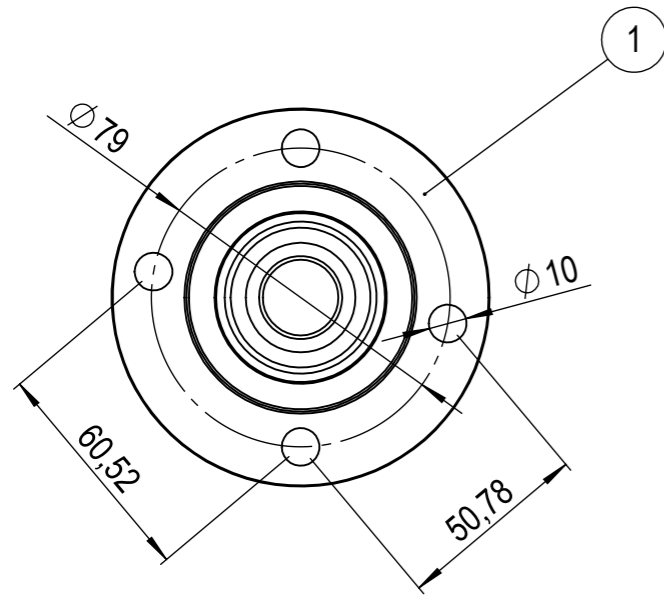


Item	Qty.	Part No.	Description	Note
1	1	A3400048	Main shaft Assembly RDT175	
2	1	A3400049	Layshaft Assembly RDT175	
3	1	A5700018	Main housing assembly, RDT175	
4	1	A5800035	Rear cover assembly, RDT	
5	1	A5900012	Gear level assembly	
6	1	A5900014	Selector barrel Assembly RDT175	
7	1	See clutch shaft options	Clutch shaft	

Material		Proj	Scale	Units	Mass, gram	Geometric tolerances		This drawing defines the requirements of the finished (complete) part(s), if not stated otherwise			
Approved and released by		1:5		mm / g							
Checked by		Description									
J.Thide		RDT175 Assembly									
Drawn by		2020-09-15									
J.Thide		2019-05-21									
Designed by		JThide		Sheet		Part and drawing number		Category		Revision	
				4/4		RDT 175				A	



Gjutargatan 54 S-781 70 Borlänge - Sweden



Rev.	Note	Date	Rev. By	Appr. By
A	New Document	2020-09-15	JT	JT

Item	Qty.	Part No.	Description	Note
1	1	39019600	Flange, Volvo PCD 79	
2	1	39019700	Flange, Ford Atlas	
3	1	39019800	Flange, Volvo Hardy Disc	

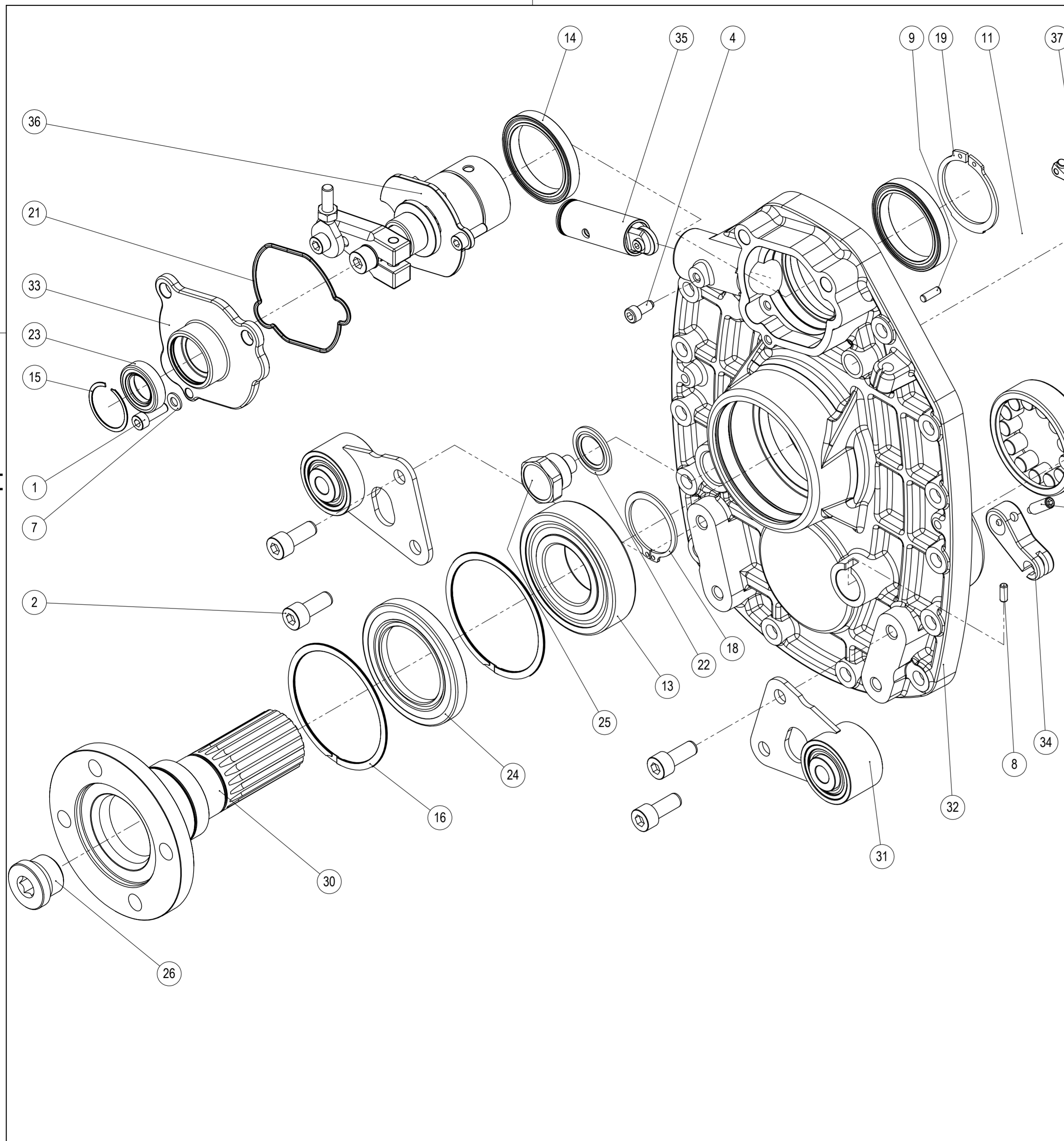
Material	Proj	Scale	Units	Mass, gram	Geometric tolerances	This drawing defines the requirements of the finished (complete) part(s), if not stated otherwise
Approved and released by	J.Thide	2020-09-15	1:2	mm / g		
Checked by	J.Thide	2020-09-15	Description RDT output flanges			
Drawn by	J.Thide	2019-05-21	Sheet 1/1		Part and drawing number A3900003	
Designed by	J.Thide	2019-05-21	Category		Revision A	

Approved

Model: A580035 Rev. A

Tractive AB
Göteborgsgränd 54 S-781 70 Borlänge
Tel: +46 243 22 11 55 www.tractive.se

This drawing is the property of Tractive AB. Its submission does not include or carry the right to make, use or sell what is illustrated without the written consent of Tractive AB.



Rev.	Note	Date	Rev. By	Appr. By
A	New Document	2018-02-19	JG	JG

Item	Qty.	Part No.	Description	Note
1	1	121005016-12.9FZ	Allen Screw DIN912 M5 x 16 12.9Z	
2	4	121008020-12.9FZ	Allen screw DIN912 M8 x 20 12.9Z	
3	1	122905020-SPEC	Grub screw T6SS M5 x 20 SPEC	
4	1	14700300	Screw, detent, plunger L=11.5	
5	1	16022700	Axial washer, reverse idler gear	
6	1	16022800	Axial washer 28 x 18 x 2	
7	1	16400500	Plain washer 5.3 x 10 /M5	
8	1	17304100	Cyl. pin 4 x 10	
9	1	17304120	Cyl. pin, CPK 4m6x12 Hardened	
10	1	20150206	Roller Bearing NJ206 ECP	
11	1	20161010-R	Needle Roller Bearing RNU 1010 ECP	
12	2	2052182413	Needle Roller Bearing K 18 X 24 X 13	
13	1	20756207	Radial Support Bearing 6207-2RS1/C3	
14	2	207661808	Radial Support 61808-2RZ	
15	1	21142800	Retaining ring, Internal, VHM-28	Metric Light Duty Single Turn
16	2	21177200	Lock ring, Internal, EH-72	Metric Aerospace, Spirolox
17	1	21181800	Lock ring spirolox DNS-18	
18	1	21203500	Circlip Sga 35 DIN 471 - 35 x 1.5	
19	1	21204000	Retaining ring SGA 40, DIN471	
20	1	23120018	O-ring 18 x 2 NBR 70	
21	1	23120068	O-ring 68 x 2 NBR 70	
22	1	23220728	Dowty washer 20.7 x 28 x 1.5 M20	
23	1	24001602807	Radial Seal 16 x 28 x 7	
24	1	24004507208	Seal 45x72x8	
25	1	25032015	Magnetic plug M20 x 1.5	
26	1	25060022	Plugg M22x1.5	
27	1	33020900	Axial bushing, reverse idler gear	
28	1	34040800	Axle, reverse idler gear	
29	1	35020100	Idler gear reverse RD_SD90	
30	1	39019600	Flange, Volvo PCD 79	
31	2	43261701	Rear mount RDT complete	
32	1	58315500	Cover, RDT	
33	1	58320200	Ratchet cover, RDT	
34	1	59381600	Barrel release lever, outside	
35	1	A5900002	Detent Plunger assembly	
36	1	A5900015	Ratchet Assembly RDT175	
37	1	A5900016	Reverse release axle, RDT assembly	

Rear cover assembly, RDT

Geometric Tolerance	Sheet 1/1	Mass in Gram 5174	Dim.in mm	Note
TRACTIVE		Date 2018-02-19	Proj	Part Number
Drawn by JT	Designed by HF	Scale 1:1.5	Revision A	

A5800035 A

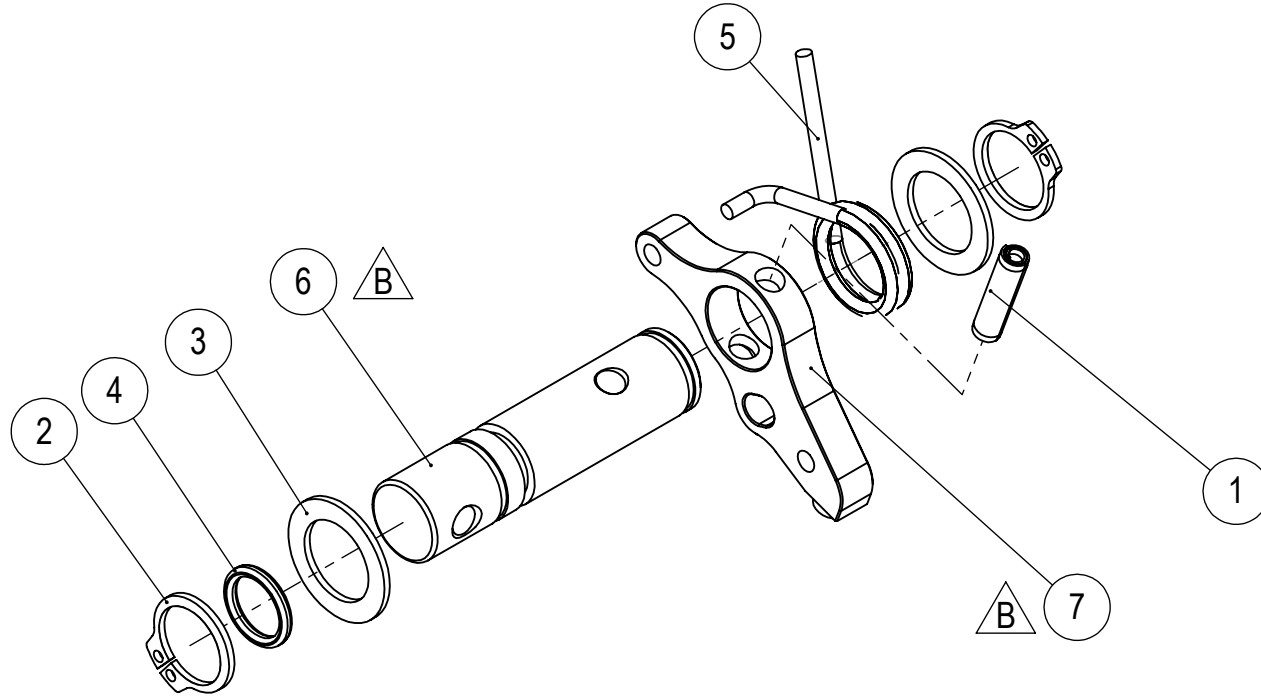
This drawing is the property of Tractive AB. Its submission does not include or carry the right to make, use or sell what is illustrated without the written consent of Tractive AB.

Tractive AB
 Gjutargatan 54 S-781 70 Borlänge
 Tel +46 243 22 11 55 www.tractive.se

Model: A5900016 Rev: B

Approved

Rev.	Note	Date	Rev. By	Appr. By
B	New reverse release mechanism	2018-09-04	JT	JG
A	New Document	2018-02-19	JG	JG



Item	Qty.	Part No.	Description	Note
1	1	17504160	Roll pin 4 x 16	
2	2	21201200	Circlip Sga 12 DIN 471 - 12 x 1	
3	2	22111210	Support ring 12 x 18 x 1	
4	1	23115009	O-ring 9 x 1.5 NBR 70	
5	1	32080800	Spring, release mech	
6	1	59101800	Detent release axle v2, RDT	
7	1	59150700	Pawl, barrel release mech	

Material		Description Reverse release axle, RDT assembly		
Geometric Tolerance	Sheet 1/1	Mass in Gram 67	Dim.in mm	Note
TRACTIVE		Date 2018-02-19	Proj	Part Number A5900016
		Drawn by JT	Designed by JT	Scale 1:1
				Revision B

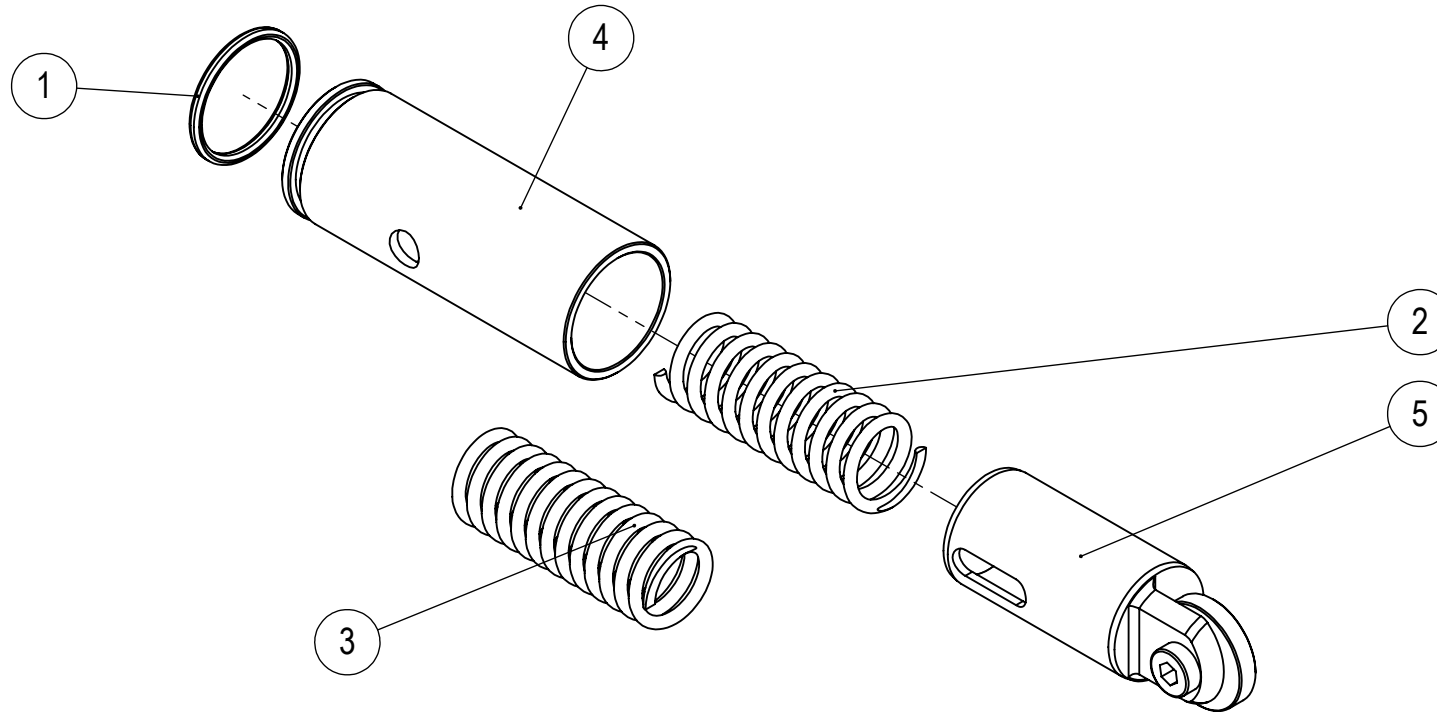
This drawing is the property of Tractive AB. Its submission does not include or carry the right to make, use or sell what is illustrated without the written consent of Tractive AB.

Tractive AB
 Gjutargatan 54 S-781 70 Borlänge
 Tel +46 243 22 11 55 www.tractive.se

Model: A5900002 Rev:

Approved

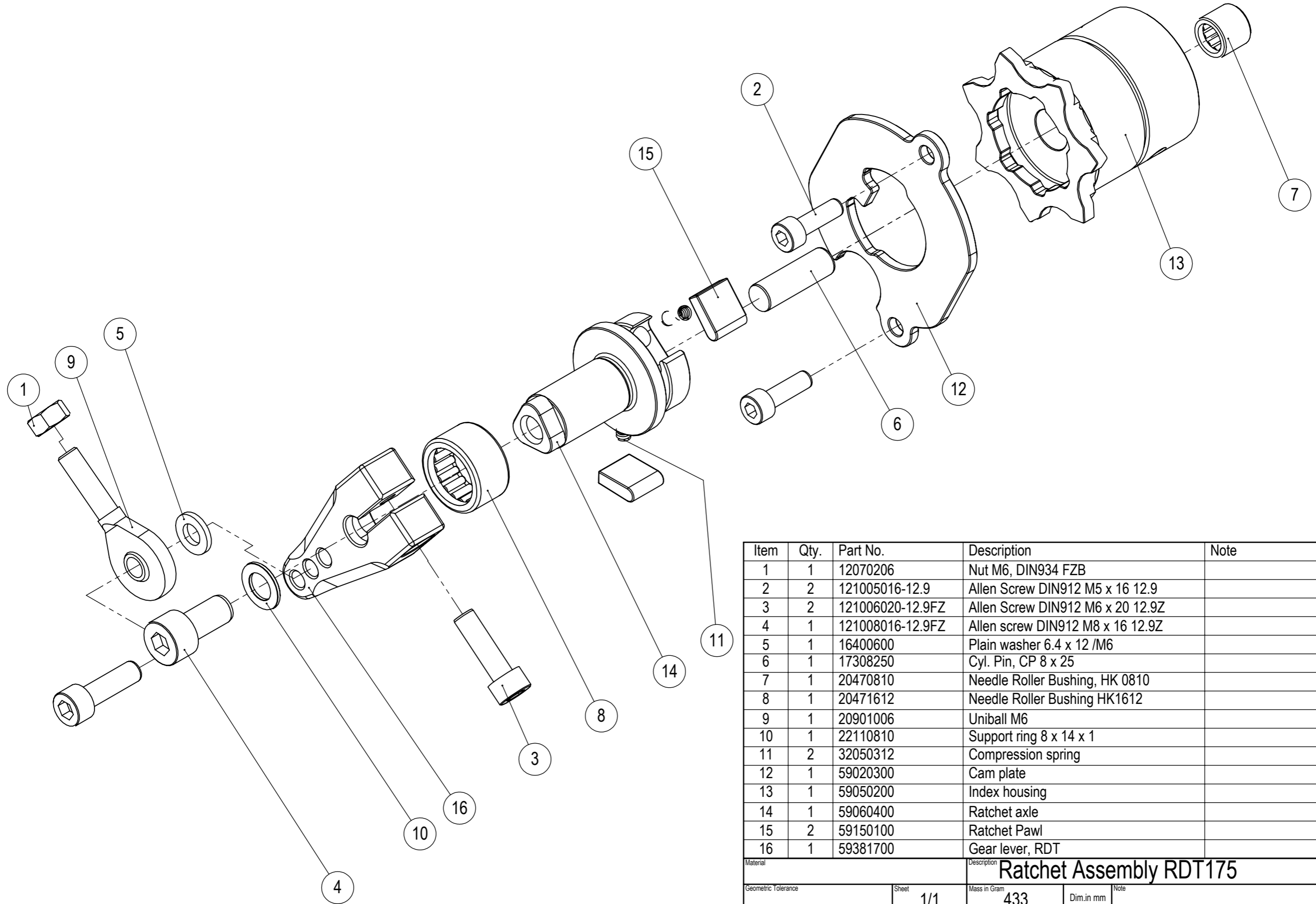
Rev.	Note	Date	Rev. By	Appr. By
A	New Document	2018-01-02	JH	JH



Item	Qty.	Part No.	Description	Note
1	1	23115017	O-ring 17 x 1.5 NBR 70	
2	1	32181045	Spring, Detent plunger	Standard
3	1	32181055	Spring long, Detent plunger	HD
4	1	59030100	Housing, detent plunger, RD	
5	1	59210201	Detent Plunger	

Material		Description Detent Plunger assembly		
Geometric Tolerance	Sheet 1/1	Mass in Gram	Dim.in mm	Note
TRACTIVE		Date 2018-01-02	Proj	Part Number
		Drawn by JT	Designed by J.Thide	Scale 1:1
				Revision A5900002 A

Rev.	Note	Date	Rev. By	Appr. By
A	New Document	2018-02-19	JG	JG

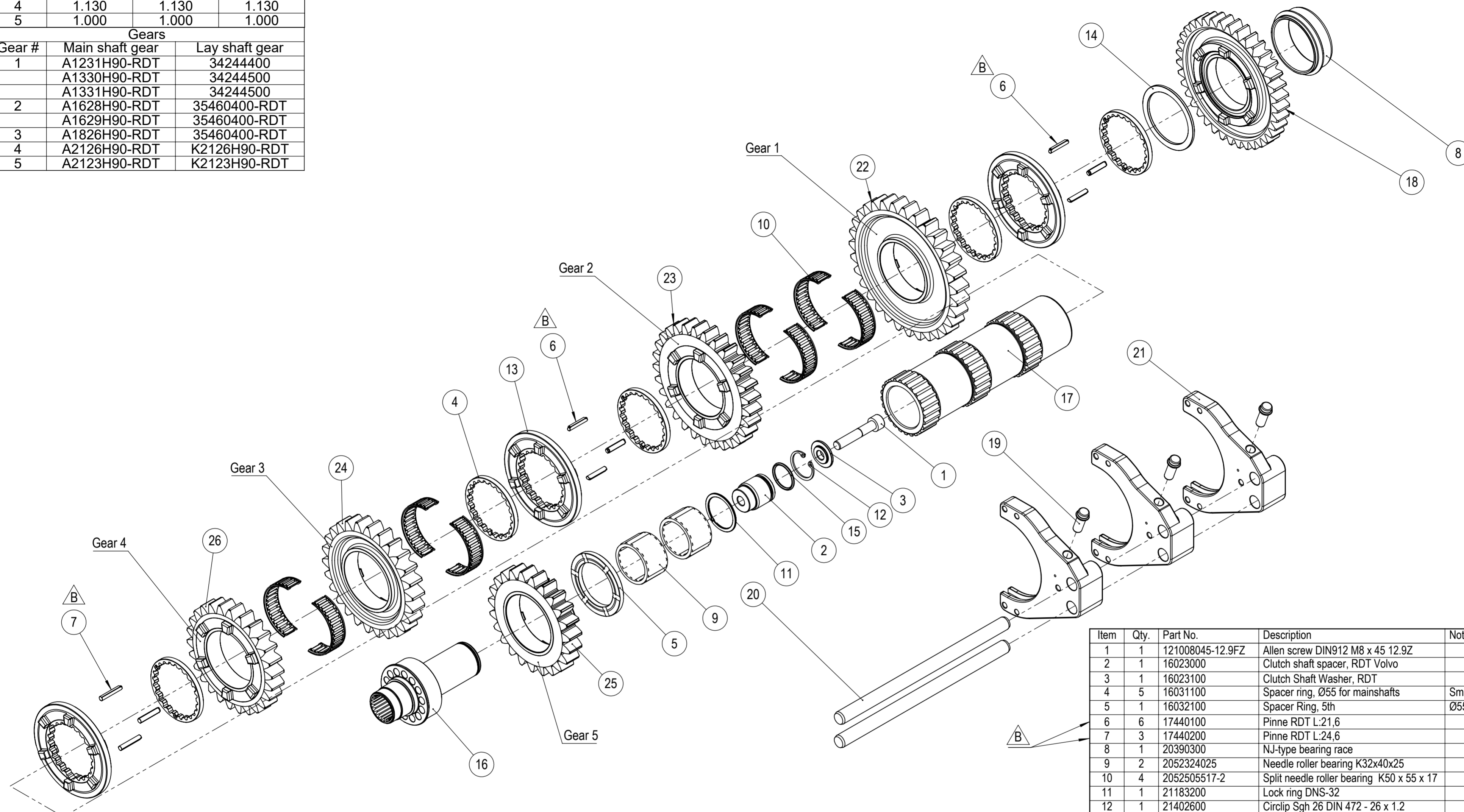


Item	Qty.	Part No.	Description	Note
1	1	12070206	Nut M6, DIN934 FZB	
2	2	121005016-12.9	Allen Screw DIN912 M5 x 16 12.9	
3	2	121006020-12.9FZ	Allen Screw DIN912 M6 x 20 12.9Z	
4	1	121008016-12.9FZ	Allen screw DIN912 M8 x 16 12.9Z	
5	1	16400600	Plain washer 6.4 x 12 /M6	
6	1	17308250	Cyl. Pin, CP 8 x 25	
7	1	20470810	Needle Roller Bushing, HK 0810	
8	1	20471612	Needle Roller Bushing HK1612	
9	1	20901006	Uniball M6	
10	1	22110810	Support ring 8 x 14 x 1	
11	2	32050312	Compression spring	
12	1	59020300	Cam plate	
13	1	59050200	Index housing	
14	1	59060400	Ratchet axle	
15	2	59150100	Ratchet Pawl	
16	1	59381700	Gear lever, RDT	

Material		Description Ratchet Assembly RDT175		
Geometric Tolerance	Sheet 1/1	Mass in Gram 433	Dim.in mm	Note
TRACTIVE		Date 2018-02-19	Proj	Part Number
		Drawn by JT	Designed by JT	Scale 1:1
				Revision A5900015 A

Ratio Options			
	13A	13B	12A
1	2.107	2.177	2.359
2	1.598	1.598	1.655
3	1.319	1.319	1.319
4	1.130	1.130	1.130
5	1.000	1.000	1.000

Gears		
Gear #	Main shaft gear	Lay shaft gear
1	A1231H90-RDT	34244400
	A1330H90-RDT	34244500
	A1331H90-RDT	34244500
2	A1628H90-RDT	35460400-RDT
	A1629H90-RDT	35460400-RDT
3	A1826H90-RDT	35460400-RDT
4	A2126H90-RDT	K2126H90-RDT
5	A2123H90-RDT	K2123H90-RDT



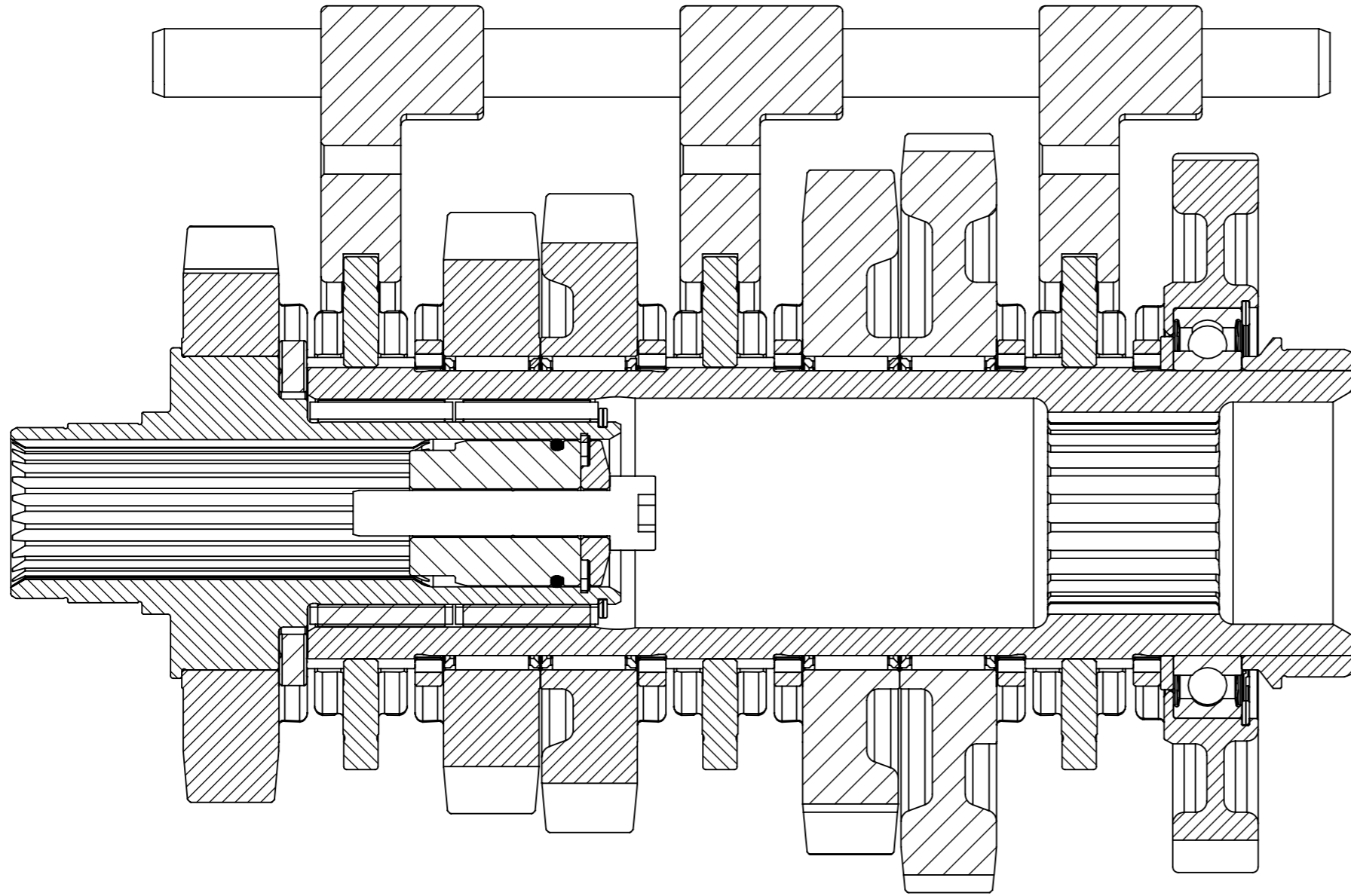
Rev.	Note	Date	Rev. By	Appr. By
B	Replaced needle rollers (20514024) with new pins	2018-03-26	HF	JT
A	New Document	2018-02-15	JG	JG

Item	Qty.	Part No.	Description	Note
1	1	121008045-12.9FZ	Allen screw DIN912 M8 x 45 12.9Z	
2	1	16023000	Clutch shaft spacer, RDT Volvo	
3	1	16023100	Clutch Shaft Washer, RDT	
4	5	16031100	Spacer ring, Ø55 for mainshafts	Small dogs
5	1	16032100	Spacer Ring, 5th	Ø55 main shafts
6	6	17440100	Pinne RDT L:21,6	
7	3	17440200	Pinne RDT L:24,6	
8	1	20390300	NJ-type bearing race	
9	2	2052324025	Needle roller bearing K32x40x25	
10	4	2052505517-2	Split needle roller bearing K50 x 55 x 17	
11	1	21183200	Lock ring DNS-32	
12	1	21402600	Circlip Sgh 26 DIN 472 - 26 x 1.2	
13	3	22030600	Dog Ring, OD90, DP12-24	
14	1	22116222	Support ring 50 x 62 x 2.2	
15	1	23120022	O-ring 22 x 2 NBR 70	
16	1	34150200	Input adapter shaft, RDT175	
17	1	34254400-RDT175	Main shaft, modular RDT-175	RDT-175
18	1	35030601	Reverse gear, 37T	
19	3	59140100	Selector pin	
20	2	59260300	Selector rod, L=206,5	
21	3	59270500	Shift fork	
22	1	See gear option list	A-gear, 17 mm, RDT, 1st	
23	1	See gear option list	A-gear, 17mm, RDT, 2nd	
24	1	A1826H90-RDT	A-gear, 17mm, RDT, 18:26, 1.444:1	
25	1	A2123H90-RDT	A-gear, 17mm, RDT, 21:23, 1.095:1	
26	1	A2126H90-RDT	A-gear, 17mm, RDT, 21:26, 1.238:1	

Main shaft Assembly RDT175

Geometric Tolerance	Sheet 1/2	Mass in Gram 8551	Dim.in mm	Note
TRACTIVE		Date: 2018-02-15	Part Number	Revision
Drawn by: JT	Designed by: JT	Scale: 1:2.5	A3400048 B	

Rev.	Note	Date	Rev. By	Appr. By
B	Replaced needle rollers (20514024) with new pins	2018-03-26	HF	JT
A	New Document	2018-02-15	JG	JG



SECTION A-A
SCALE 1 : 1

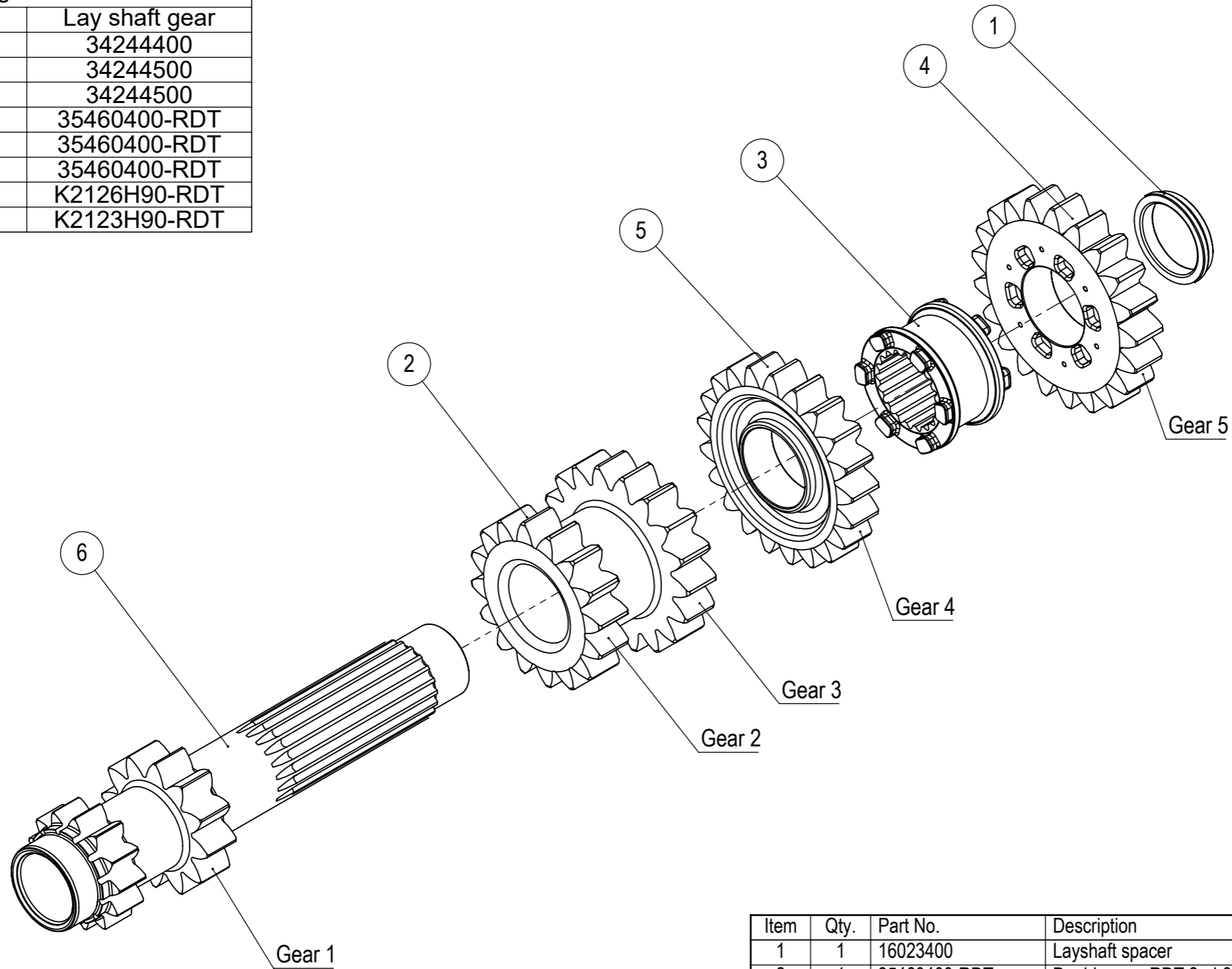


Material		Description Main shaft Assembly RDT175		
Geometric Tolerance	Sheet 2/2	Mass in Gram 8551	Dim.in mm	Note
TRACTIVE		Date 2018-02-15	Proj	Part Number
		Drawn by JT	Designed by JT	Scale 1:2
			A3400048	B

Ratio Options			
	13A	13B	12A
1	2.107	2.177	2.359
2	1.598	1.598	1.655
3	1.319	1.319	1.319
4	1.130	1.130	1.130
5	1.000	1.000	1.000

Gears		
Gear #	Main shaft gear	Lay shaft gear
1	A1231H90-RDT	34244400
	A1330H90-RDT	34244500
	A1331H90-RDT	34244500
2	A1628H90-RDT	35460400-RDT
	A1629H90-RDT	35460400-RDT
3	A1826H90-RDT	35460400-RDT
4	A2126H90-RDT	K2126H90-RDT
5	A2123H90-RDT	K2123H90-RDT

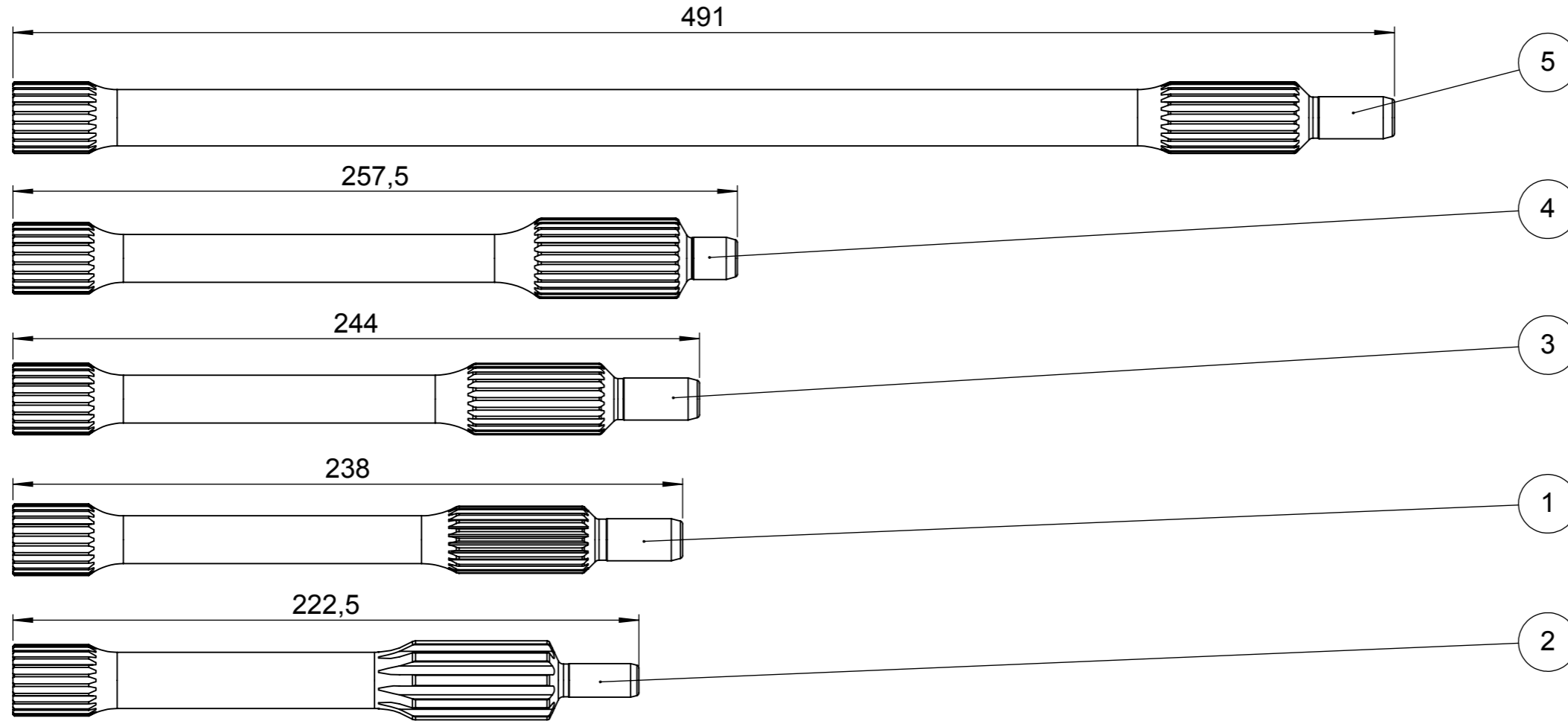
Rev.	Note	Date	Rev. By	Appr. By
A	New Document	2018-02-15	JG	JG



Item	Qty.	Part No.	Description	Note
1	1	16023400	Layshaft spacer	
2	1	35460400-RDT	Double gear RDT 2nd-3rd 17mm	16/28 - 18/26
3	1	39020400	Drive hub L=29	
4	1	K2123H90-RDT	K-gear, 17mm RDT, 21:23, 1.095:1	
5	1	K2126H90-RDT	K-gear 17mm RDT, 21:26, 1.238:1	
6	1	See gear option list	Input shaft	

Material		Description Layshaft Assembly RDT175		
Geometric Tolerance	Sheet 1/1	Mass in Gram 3365	Dim.in mm	Note
TRACTIVE		Date 2018-02-15	Proj	Part Number
		Drawn by JT	Designed by JT	Scale 1:2
				Revision A3400049 A

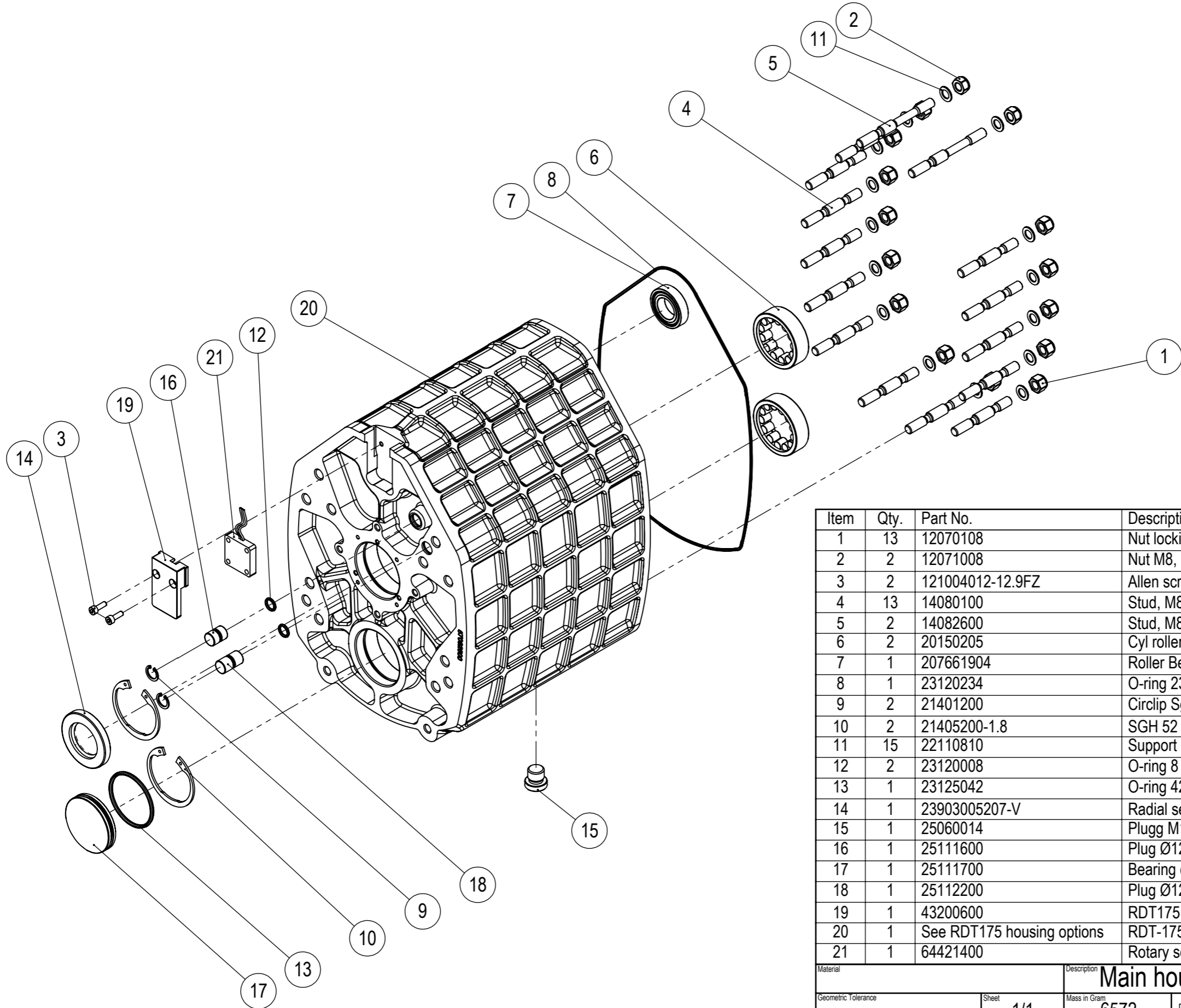
Rev.	Note	Date	Rev. By	Appr. By
A	Updated after migration	2017-12-07	JT	JG



Item	Qty.	Part No.	Description	Note
1	1	34145200	Clutch shaft, Ford 1", 23 splines	Volvo STD
2	1	34145500	Clutch shaft RDT, BMW std.	
3	1	34145600	Clutch shaft, Ford 1", 23 splines	Ford STD
4	1	34146100	Clutch shaft, GM 1 1/8" 26 Splines	GM 26
5	1	34146200	Clutch shaft, Ford 1", 23 splines	491mm

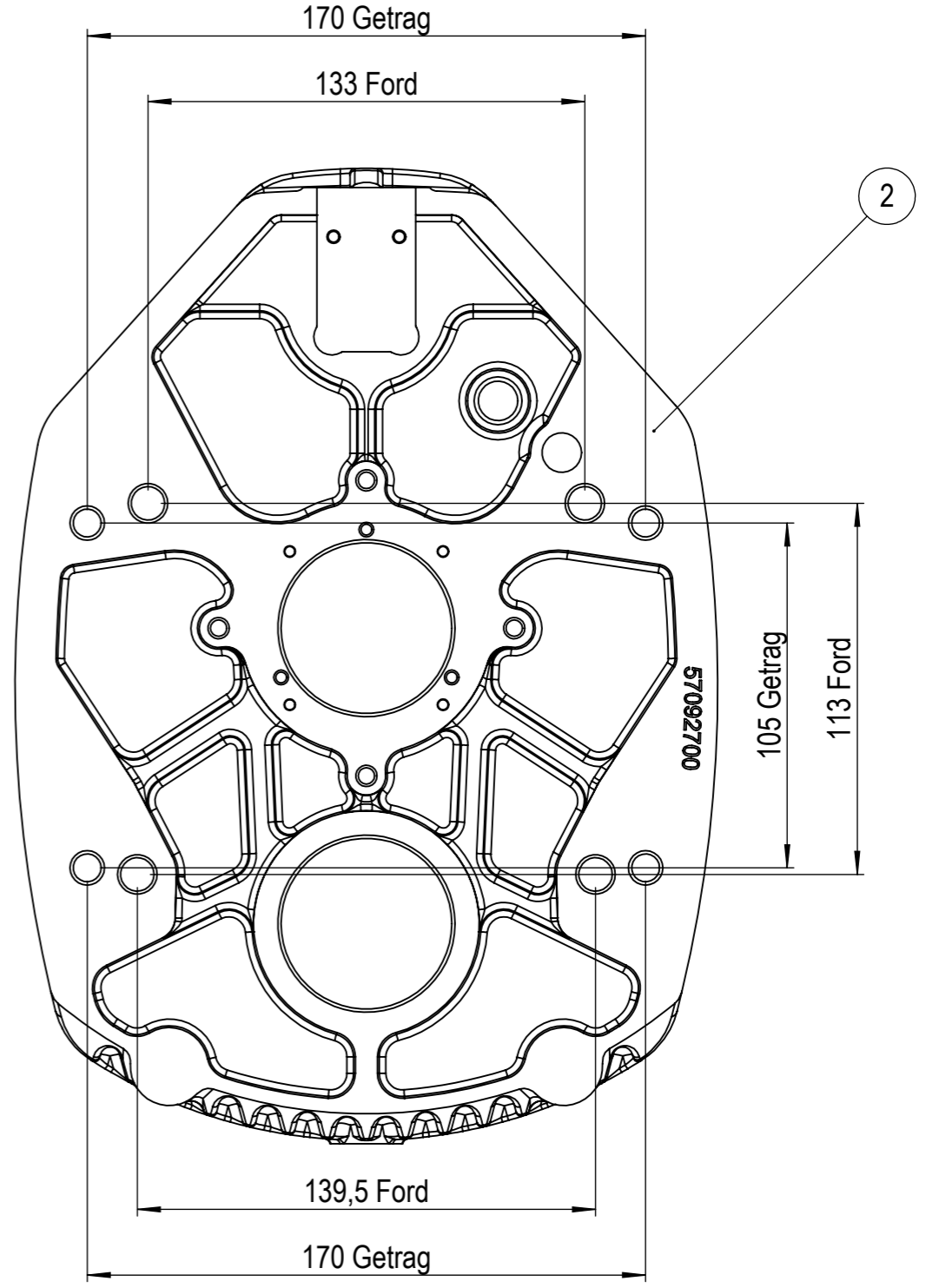
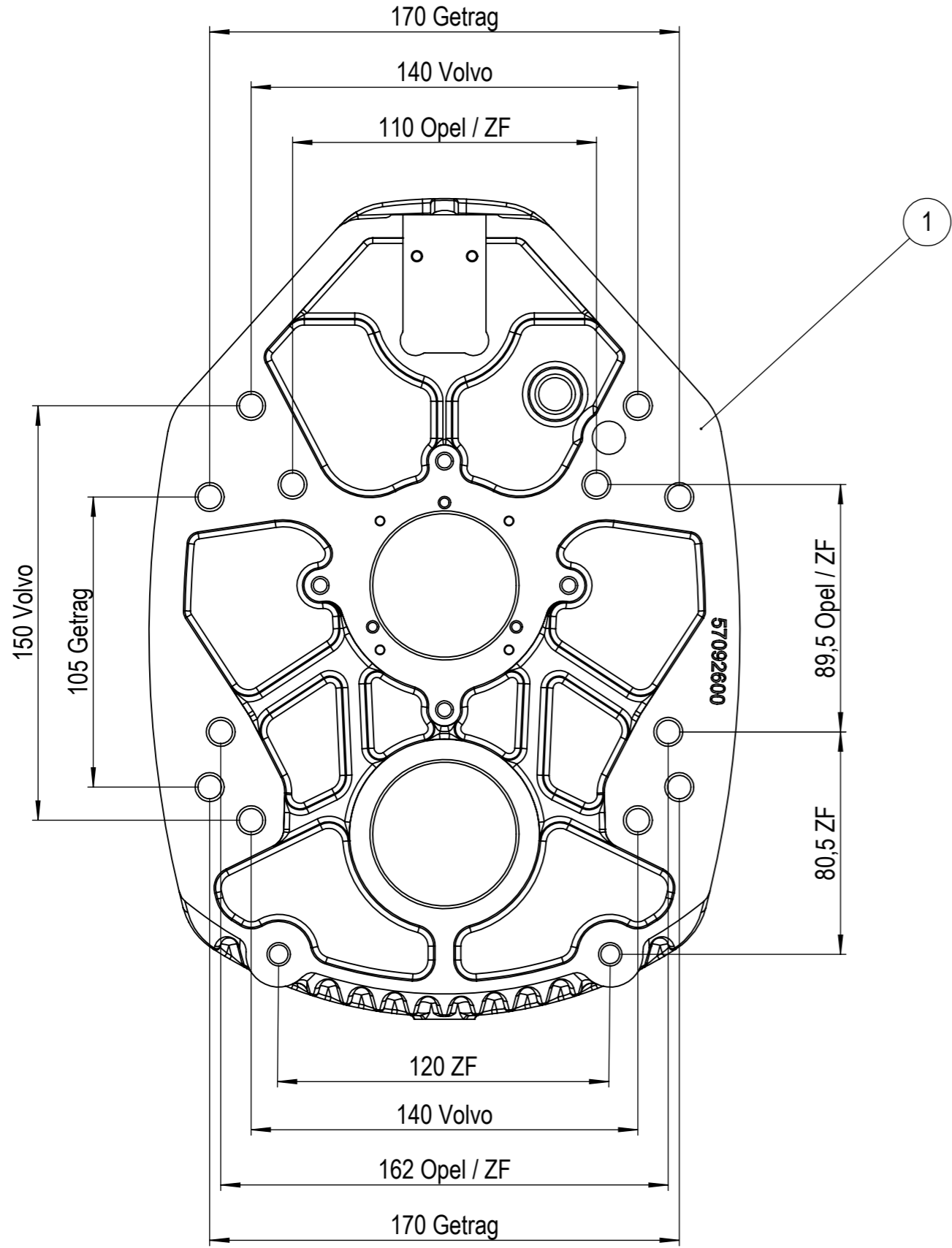
Material		Description Clutch shaft RDT		
Geometric Tolerance	Sheet 1/1	Mass in Gram	Dim.in mm	Note
TRACTIVE		Date	Proj	Part Number
		Drawn by	Designed by JT	Scale 1:2
				Revision A3400057 A

Rev.	Note	Date	Rev. By	Appr. By
A	New Document	2018-02-19	JG	JG



Item	Qty.	Part No.	Description	Note
1	13	12070108	Nut locking DIN982 M8	
2	2	12071008	Nut M8, Nyloc DIN985	
3	2	121004012-12.9FZ	Allen screw DIN912 M4 x 12 12.9Z	
4	13	14080100	Stud, M8, L=66	
5	2	14082600	Stud, M8, L=87	
6	2	20150205	Cyl roller bearing NJ 205 ECP	
7	1	207661904	Roller Bearing 61904-2RZ	
8	1	23120234	O-ring 234 x 2 NBR 70	
9	2	21401200	Circlip Sgh 12 DIN 472 - 12 x 1.0	
10	2	21405200-1.8	SGH 52 1.8	
11	15	22110810	Support ring 8 x 14 x 1	
12	2	23120008	O-ring 8 x 2 NBR 70	
13	1	23125042	O-ring 42 x 2.5 NBR70	
14	1	23903005207-V	Radial seal 30 x 52 x 7	
15	1	25060014	Plugg M14 x 1.5 ED with flange	
16	1	25111600	Plug Ø12 L=16mm, RDT	Plugg Selector Rod RDT
17	1	25111700	Bearing cap, RDT	
18	1	25112200	Plug Ø12 L=22mm, RDT	Plugg Selector Rod RDT
19	1	43200600	RDT175 - RFA360-5KP sensorcover	
20	1	See RDT175 housing options	RDT-175 Housing	
21	1	64421400	Rotary sensor	

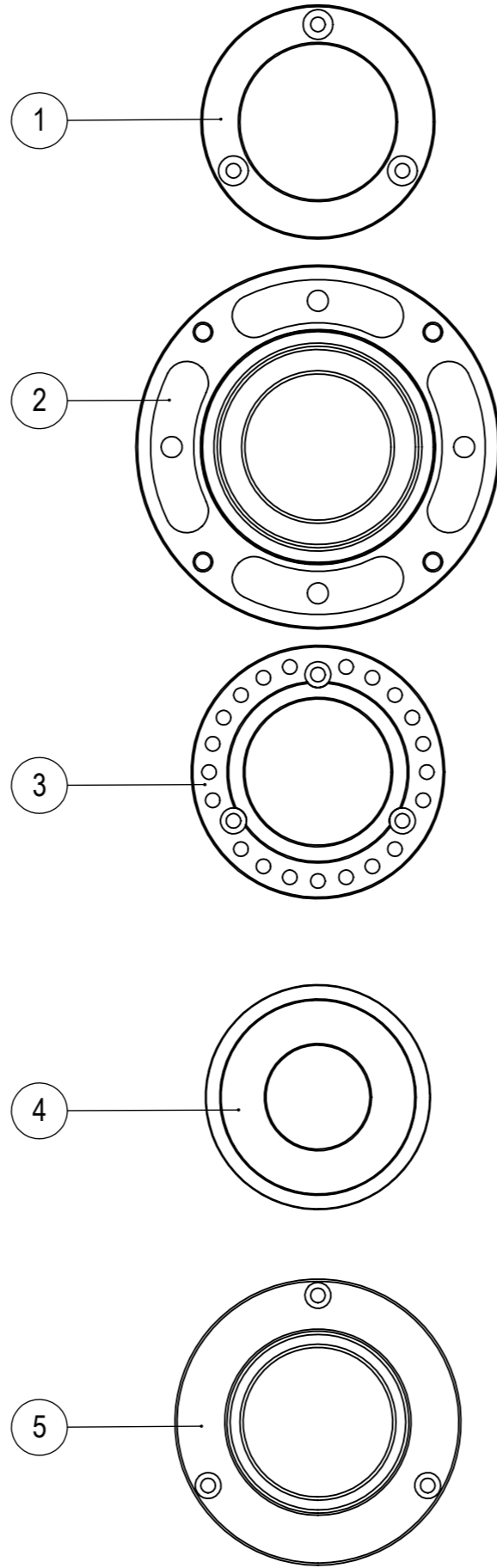
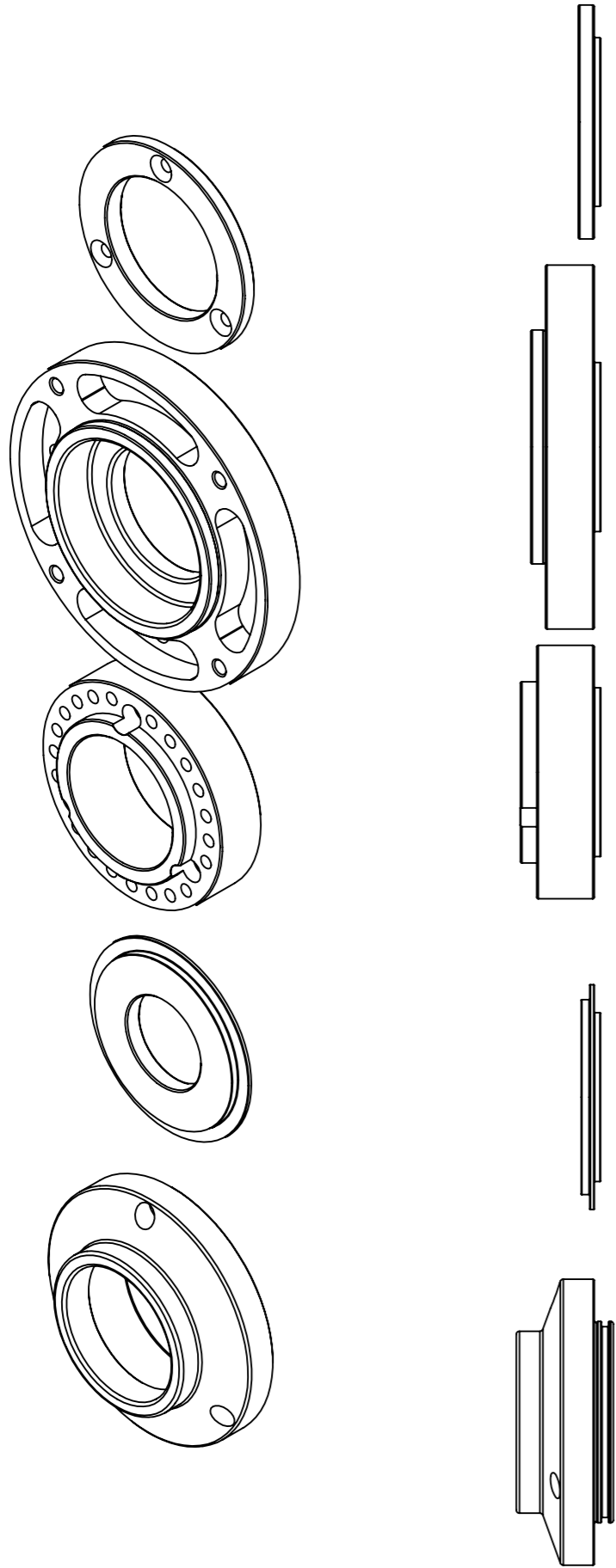
Material		Description Main housing assembly, RDT175		
Geometric Tolerance	Sheet 1/1	Mass in Gram 6572	Dim.in mm	Note
TRACTIVE		Date 2018-02-19	Proj	Part Number
		Drawn by JT	Designed by JT	Scale 1:3.5
Main Housing				A



Rev.	Note	Date	Rev. By	Appr. By
A	New Document	2020-09-15	JT	JT

Item	Qty.	Part No.	Description	Note
1	1	57092600	RDT-175 Housing	Volvo/Getrag/Opel
2	1	57092700	RDT-175 with RFA360-5KP sensor	Ford/Getrag

Material	Proj	Scale	Units	Mass, gram	Geometric tolerances	This drawing defines the requirements of the finished (complete) part(s), if not stated otherwise
	⊕	1:2	mm / g			
Approved and released by	J.Thide	2020-09-15	Beskrivning			
Checked by	J.Thide	2020-09-15	Description			
Drawn by	J.Thide	2020-09-15	RDT175 Housing options			
Designed by	J.Thide	2020-09-15	Sheet			
			Part and drawing number		Category	Revision
			1/1 A5700047			A



Rev.	Note	Date	Rev. By	Appr. By
A	New Document	2020-09-15	JT	JT

Item	Qty.	Part No.	Description	Note
1	1	26320200	Guide ring RDT/M45	
2	1	26321600	Guide ring RDT/Ford	
3	1	26321700	Guide ring RDT/Getrag	
4	1	26321800	Guide ring RDT/Opel	
5	1	26322000	Guide ring, RD, Ford-ZF	

Material	Proj	Scale	Units	Mass, gram	Geometric tolerances	This drawing defines the requirements of the finished (complete) part(s), if not stated otherwise
Approved and released by	J.Thide	2020-09-15	1:2	mm / g		
Checked by	J.Thide	2020-09-15	Description RDT175 guide ring options			
Drawn by	J.Thide	2020-09-15	Sheet 1/1		Part and drawing number A2600003	
Designed by	J.Thide	2020-09-15	Category		Revision A	

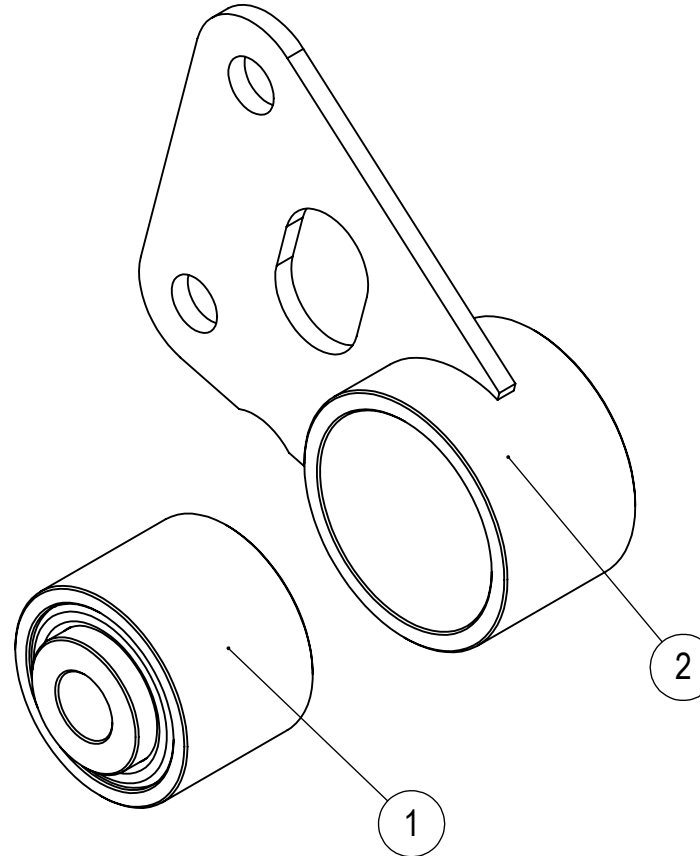
This drawing is the property of Tractive AB. Its submission does not include or carry the right to make, use or sell what is illustrated without the written consent of Tractive AB.

Tractive AB
 Gjutargatan 54 S-781 70 Borlänge
 Tel +46 243 22 11 55 www.tractive.se

Model: 43261701 Rev: A

Approved

Rev.	Note	Date	Rev. By	Appr. By
A	New Document	2018-02-13	JG	JG



Item	Qty.	Part No.	Description	Note
1	1	33270200	Bushing 32mm	
2	1	43261700	Rear Mount, welded, RDT175	
Material			Description Rear mount RDT complete	
Geometric Tolerance		Sheet 1/1	Mass in Gram 261	Dim.in mm
TRACTIVE			Date 2018-02-09	Proj
			Part Number 43261701	Revision A
		Drawn by JT	Designed by JD	Scale 1:1

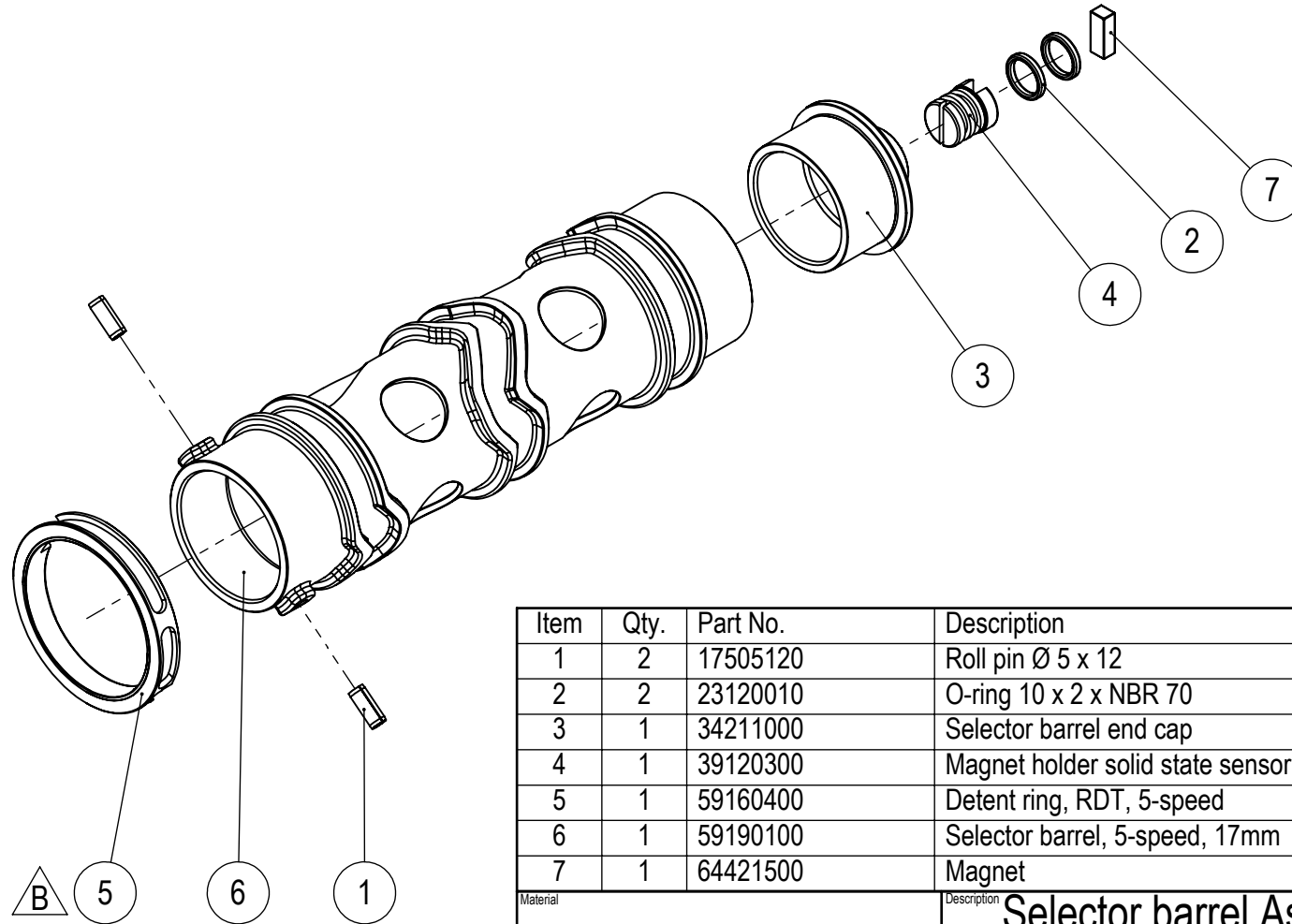
This drawing is the property of Tractive AB. Its submission does not include or carry the right to make, use or sell what is illustrated without the written consent of Tractive AB.

Tractive AB
 Gjutargatan 54 S-781 70 Borlänge
 Tel +46 243 22 11 55 www.tractive.se

Model: A5900014 Rev: B

Approved

Rev.	Note	Date	Rev. By	Appr. By
B	New reverse release mechanism	2018-09-04	JT	JG
A	New Document	2018-02-19	JG	JG



Item	Qty.	Part No.	Description	Note
1	2	17505120	Roll pin Ø 5 x 12	
2	2	23120010	O-ring 10 x 2 x NBR 70	
3	1	34211000	Selector barrel end cap	
4	1	39120300	Magnet holder solid state sensor	
5	1	59160400	Detent ring, RDT, 5-speed	
6	1	59190100	Selector barrel, 5-speed, 17mm	
7	1	64421500	Magnet	

Material		Description Selector barrel Assembly RDT175		
Geometric Tolerance	Sheet 1/1	Mass in Gram 641	Dim.in mm	Note
TRACTIVE		Date 2018-02-19	Proj	Part Number
		Drawn by JT	Designed by JD	Scale 1:2
				Revision A5900014 B

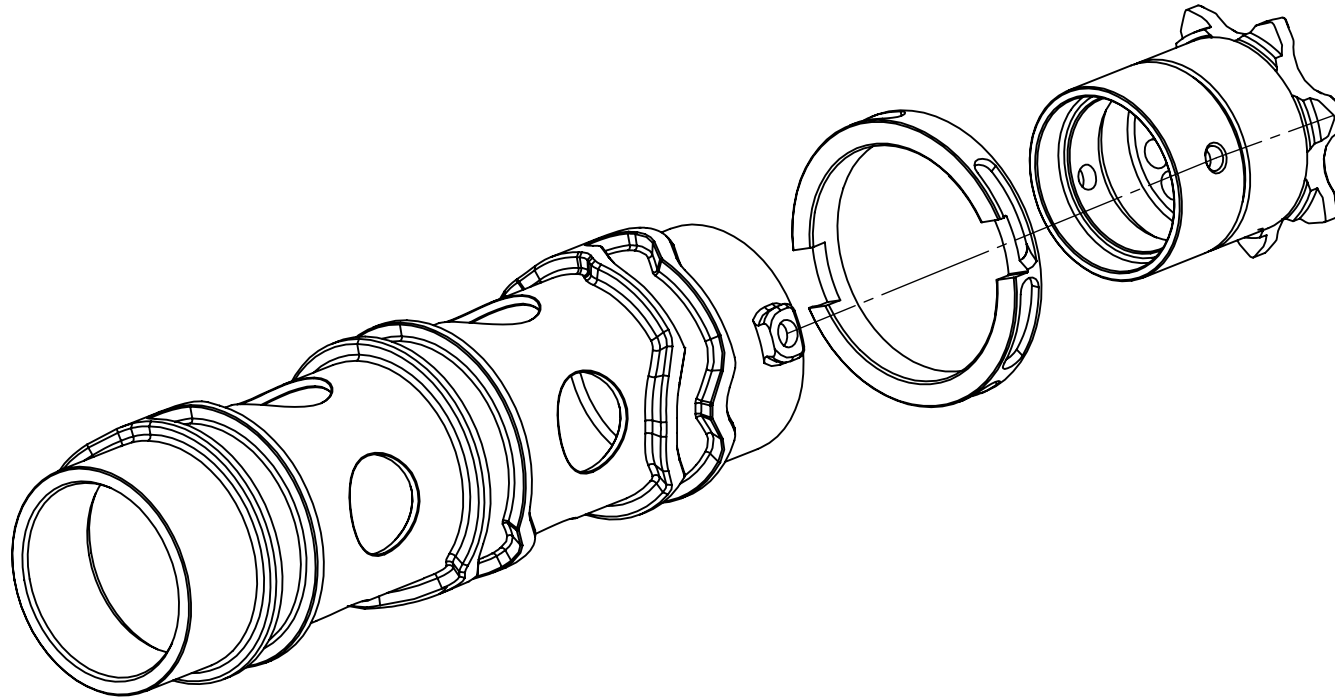
This drawing is the property of Tractive AB. Its submission does not include or carry the right to make, use or sell what is illustrated without the written consent of Tractive AB.

Tractive AB
 Gjutargatan 54 S-781 70 Borlänge
 Tel +46 243 22 11 55 www.tractive.se

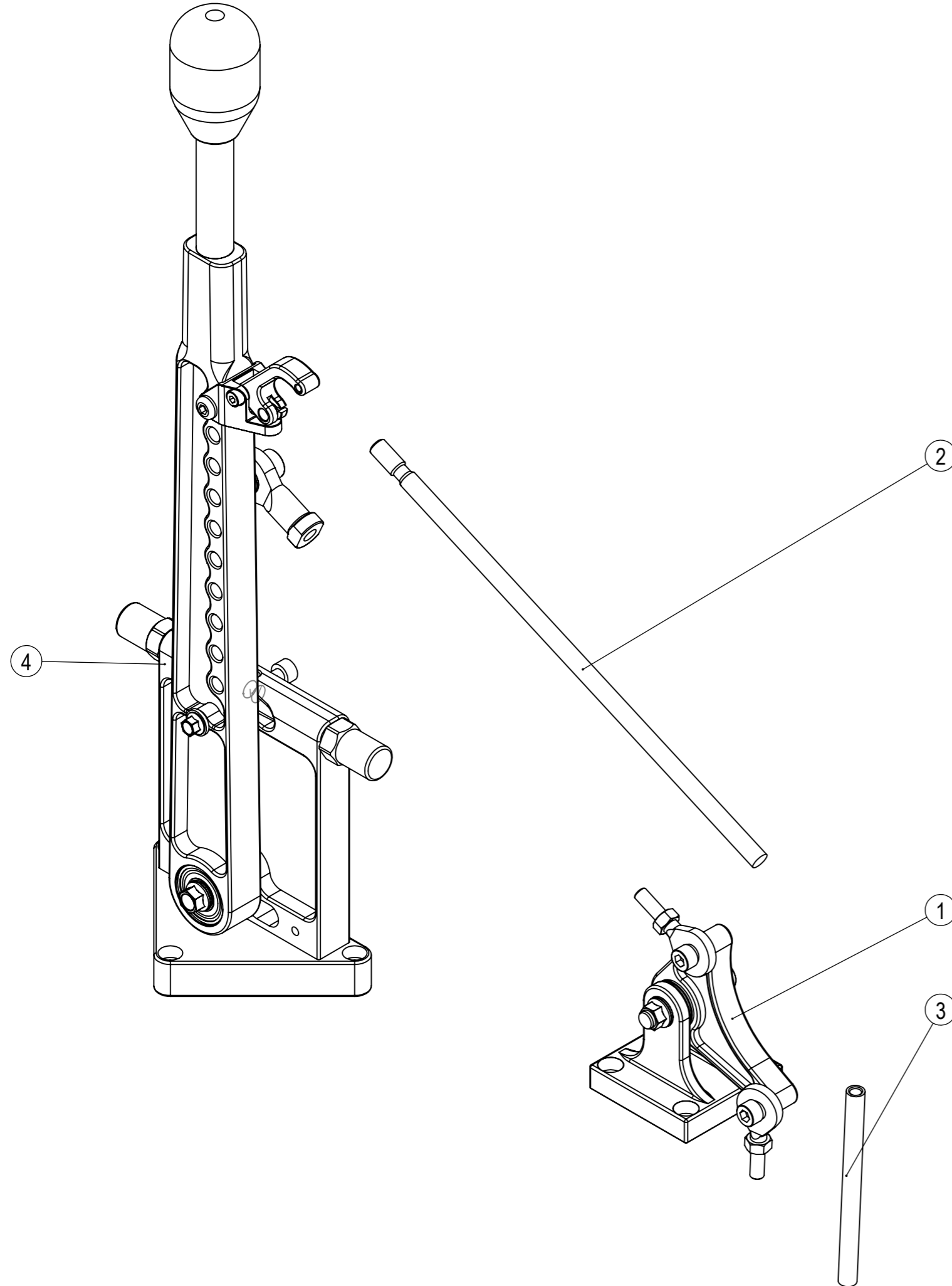
2020-09-15 Model: A5900025 Rev: A

Approved

Rev.	Note	Date	Rev. By	Appr. By
A	New Document	2020-09-15	JT	JT



Material		Proj	Scale	Units	Mass, gram	Geometric tolerances		This drawing defines the requirements of the finished (complete) part(s), if not stated otherwise	
		☐ ⊕	1:1.5	mm / g					
Approved and released by	J.Thide	2020-09-15	Beskrivning						
Checked by	J.Thide	2020-09-15	Description Selector barrel alignment RDT						
Drawn by	J.Thide	2019-05-21	TRACTIVE		Sheet	Part and drawing number		Category	Revision
Designed by	J.Thide	2019-05-21	Gjutargatan 54 S-781 70 Borlänge - Sweden		1/1	A5900025			A



Rev.	Note	Date	Rev. By	Appr. By
A	New Document	2018-01-02	JH	JH

Item	Qty.	Part No.	Description	Note
1	1	59170501	Bracket with linkage quadrant	
2	1	59180300	Link Rod, RD90, M8 universal	
3	1	59180400	Link rod RD90 M6 universal	
4	1	See gear lever options	Gear lever RD	

Material		Description Gear level assembly		
Geometric Tolerance	Sheet 1/1	Mass in Gram 1371	Dim.in mm	Note
TRACTIVE		Date 2018-01-02	Proj	Part Number
		Drawn by JT	Designed by JT	Scale 1:2
			A5900012	A

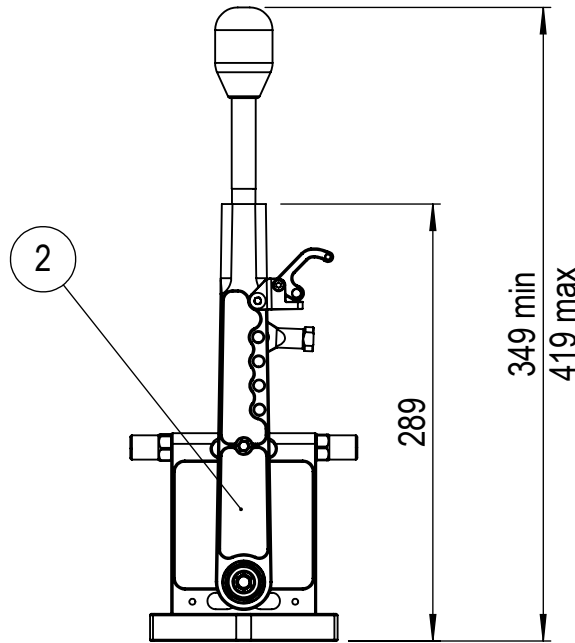
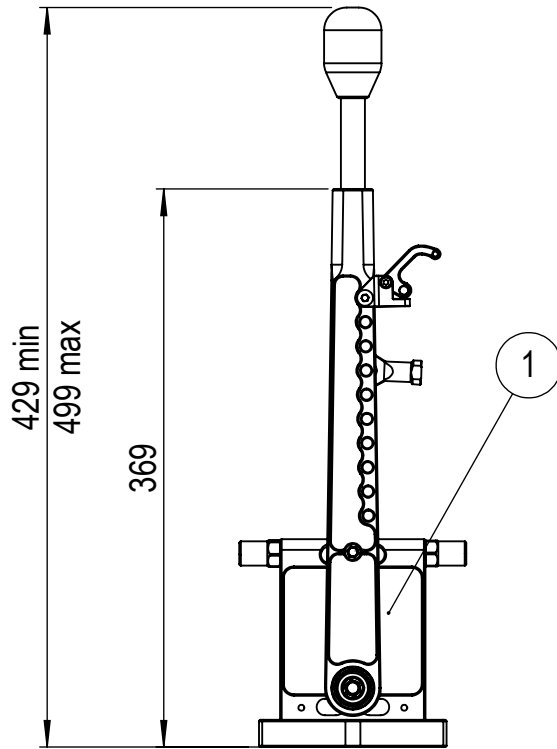
This drawing is the property of Tractive AB. Its submission does not include or carry the right to make, use or sell what is illustrated without the written consent of Tractive AB.

Tractive AB
Gjutargatan 54 S-781 70 Borlänge
Tel +46 243 22 11 55 www.tractive.se

2020-09-15 Model: A5900024 Rev: A

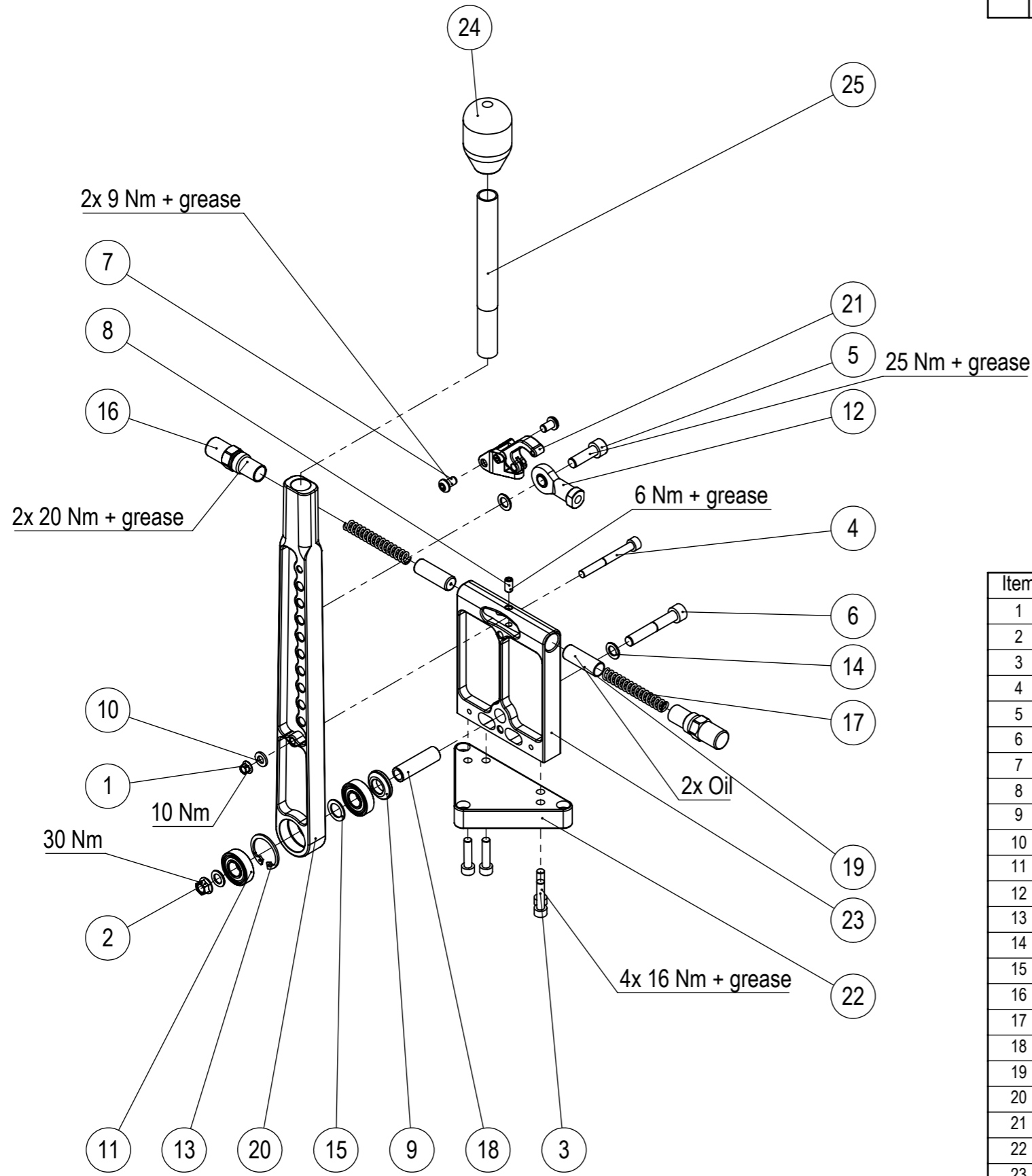
Approved

Rev.	Note	Date	Rev. By	Appr. By
A	New Document	2020-09-15	JT	JT



Item	Qty.	Part No.	Description	Note
1	1	59400201	Gear lever RD standard complete	
2	1	59400301	Gear lever RD Short Complete	

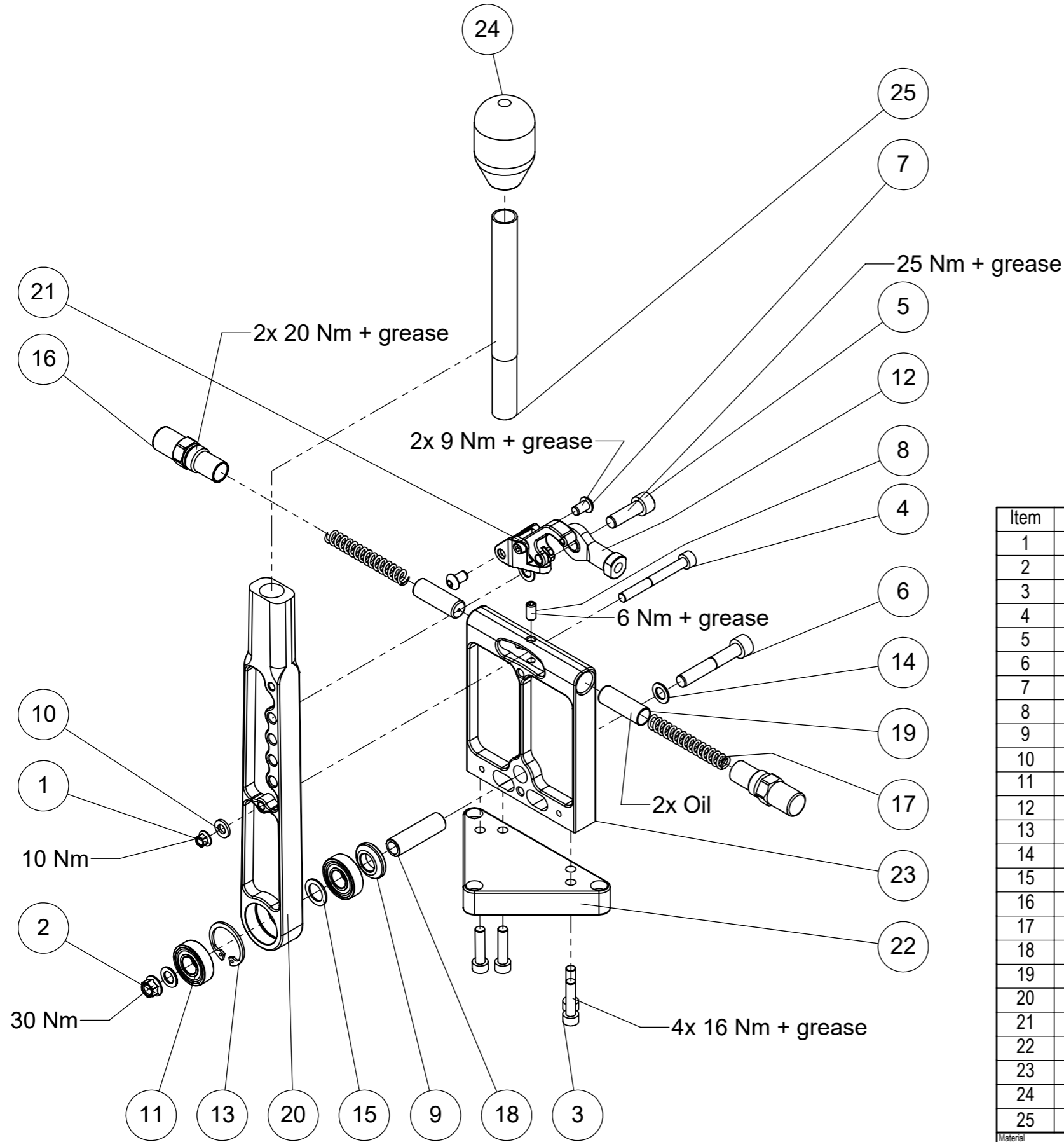
Material	Proj	Scale	Units	Mass, gram	Geometric tolerances	This drawing defines the requirements of the finished (complete) part(s), if not stated otherwise	
	⊕	1:5	mm / g				
Approved and released by	J.Thide	2020-09-15	Beskrivning				
Checked by	J.Thide	2020-09-15	Description RD gear lever options				
Drawn by	J.Thide	2019-05-20	TRACTIVE	Sheet	Part and drawing number	Category	Revision
Designed by	J.Thide	2019-05-20		Gjutargatan 54 S-781 70 Borlänge - Sweden	1/1	A5900024	



Rev.	Note	Date	Rev. By	Appr. By
A	Updated after migration	2018-01-02	JT	JH

Item	Qty.	Part No.	Description	Note
1	1	120812506	K NUT M6	
2	1	120812508	K-Nut M8	
3	4	121006025-12.9FZ	Allen Screw DIN912 M6 x 25 12.9Z	
4	1	121006055-12.9	Allen Screw DIN912 M6 x 55 12.9	
5	1	121008025-12.9FZ	Allen screw DIN912 M8 x 25 12.9Z	
6	1	121008050-12.9FZ	Allen screw DIN912 M8 x 50 12.9Z	
7	2	121306010-10.9	Allen Screw, DIN7380, M6 x 10 10.9	
8	1	122906012	Grub screw DIN916 M6 x 12	
9	1	16241900	Washer, gear lever	
10	1	16400600	Plain washer 6.4 x 12 /M6	
11	2	20756001	Radial Support Bearing, 6001-2RS1	
12	1	20911008	Uniball SI 8 E, M8	
13	1	21402815	Circlip, DIN 472 JS28 x 1.5 Heavy Duty	
14	3	22110810	Support ring 8 x 14 x 1	
15	1	22111210	Support ring 12 x 18 x 1	
16	2	26410100	Sleeve return plunger, Gear lever	
17	2	32160865	Spring 1.6 x 8 x 65.5 ID6.4	
18	1	34220200	Axel gear shift lever RD/SD	
19	2	59210400	Plunger, gear lever	
20	1	59380700	Gear lever, cockpit	
21	1	59381101	Unlock lever Complete	
22	1	59390300	Gear lever, bottom plate	
23	1	59390400	Gear lever vertical plate	
24	1	59410100	Knob, gear lever	
25	1	59590100	Tube, link rod SD L=150	

Material		Description Gear lever RD standard complete		
Geometric Tolerance	Sheet 1/1	Mass in Gram 1066	Dim.in mm	Note
TRACTIVE		Date	Proj	Part Number
		Drawn by	Designed by JT	Scale 1:4
				Revision 59400201 A



Rev.	Note	Date	Rev. By	Appr. By
B	New Document	2020-09-15	JT	JT

Item	Qty.	Part No.	Description	Note
1	1	120812506	K NUT M6	
2	1	120812508	K-Nut M8	
3	4	121006025-12.9FZ	Allen screw DIN912 M6 x 25 12.9Z	
4	1	121006055-12.9	Allen screw DIN912 M6 x 55 12.9	
5	1	121008025-12.9FZ	Allen screw DIN912 M8 x 25 12.9Z	
6	1	121008050-12.9FZ	Allen screw DIN912 M8 x 50 12.9Z	
7	2	121306010-10.9	Allen Screw, DIN7380, M6 x 10 10.9	
8	1	122906012	Grub screw DIN916 M6 x 12	
9	1	16241900	Washer, gear lever	
10	1	16402300	Plain washer, BRB 6.4 x 12 x 1.6 Stainless A4	
11	2	20756001	Radial Support Bearing, 6001-2RS1	
12	1	20911008	Uniball SI 8 E, M8	
13	1	21402815	Circlip, DIN 472 JS28 x 1.5 Heavy Duty	
14	3	22110810	Support ring 8 x 14 x 1	
15	1	22111210	Support ring 12 x 18 x 1	
16	2	26410100	Sleeve return plunger, Gear lever	
17	2	32160865	Spring 1.6 x 8 x 65.5 ID6.4	
18	1	34220200	Axel gear shift lever RD/SD	
19	2	59210400	Plunger, gear lever	
20	1	59380800	Gear lever short, cockpit	
21	1	59381101	Unlock lever Complete	
22	1	59390300	Gear lever, bottom plate	
23	1	59390400	Gear lever vertical plate	
24	1	59410100	Knob, gear lever	
25	1	59590100	Tube, link rod SD L=150	

Material		Description Gear lever RD Short Complete		
Geometric Tolerance	Sheet 1/1	Mass in Gram	Dim.in mm	Note
TRACTIVE		Date	Proj	Part Number
		Drawn by	Designed by JThide	Scale 1:3
				Revision 59400301 B

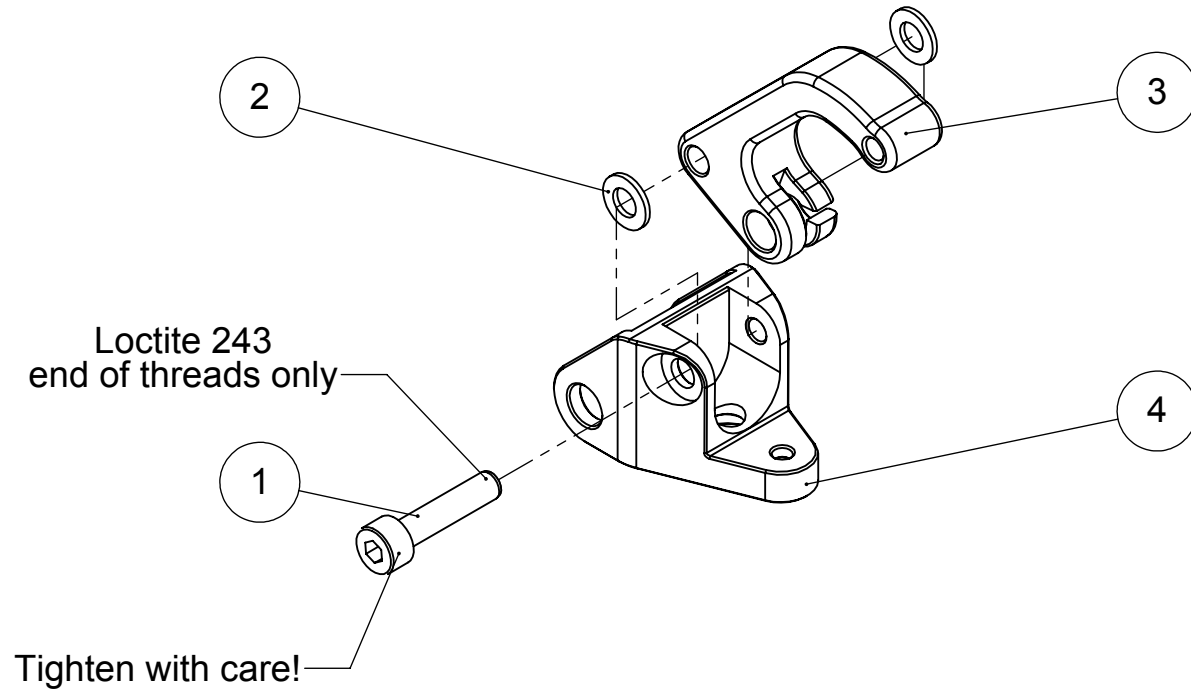
This drawing is the property of Tractive AB. Its submission does not include or carry the right to make, use or sell what is illustrated without the written consent of Tractive AB.

Tractive AB
 Giutargatan 54 S-781 70 Borlänge
 Tel +46 243 22 11 55 www.tractive.se

Model: 59381101 Rev: A

Approved

Rev.	Note	Date	Rev. By	Appr. By
A	Updated after migration	2018-01-09	JT	JG



Item	Qty.	Part No.	Description	Note
1	1	121004018-12.9FZ	Allen screw DIN912 M4 x 18 12.9Z	
2	2	16400400	Plain washer 4.3 x 9 x 0.9	
3	1	59381100	Unlock lever	
4	1	59390600	Bracket unlock Lever	

Material		Description Unlock lever Complete		
Geometric Tolerance	Sheet 1/1	Mass in Gram 24	Dim.in mm	Note
TRACTIVE		Date	Proj	Part Number
		Drawn by	Designed by JT	Scale 1:1
				Revision 59381101 A

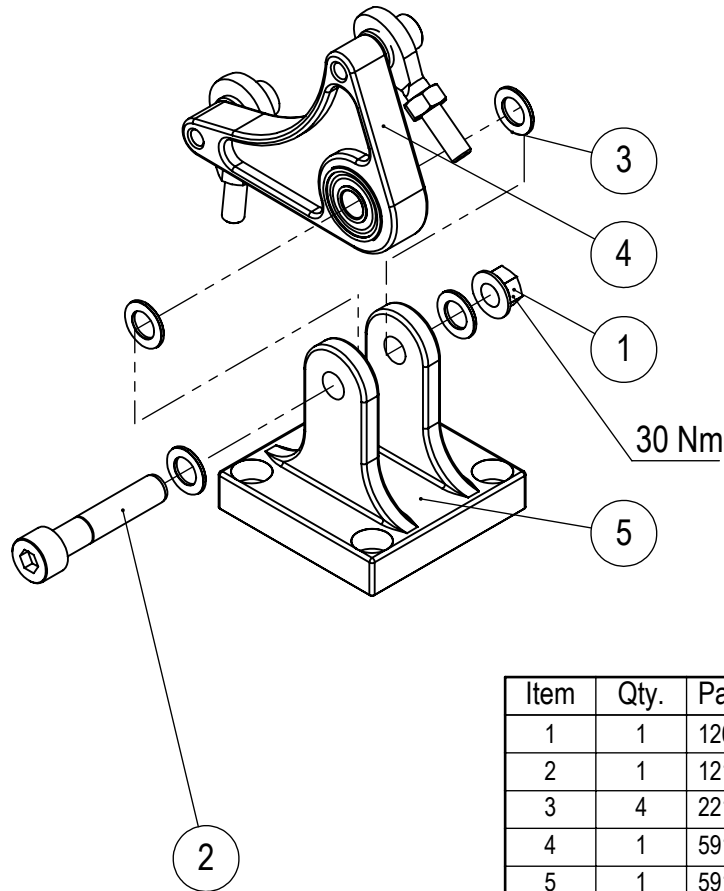
This drawing is the property of Tractive AB. Its submission does not include or carry the right to make, use or sell what is illustrated without the written consent of Tractive AB.

Tractive AB
 Gjutargatan 54 S-781 70 Borlänge
 Tel +46 243 22 11 55 www.tractive.se

Model: 59170501 Rev: A

Approved

Rev.	Note	Date	Rev. By	Appr. By
A	New Document	2018-01-09	JG	JG



Item	Qty.	Part No.	Description	Note
1	1	120812508	K-Nut M8	
2	1	121008040-12.9FZ	Allen screw DIN912 M8 x 40 12.9Z	
3	4	22110810	Support ring 8 x 14 x 1	
4	1	59170401	Bell crank assembly	
5	1	59170500	Bracket for quadrant	

Material		Description Bracket with linkage quadrant		
Geometric Tolerance	Sheet 1/1	Mass in Gram 288	Dim.in mm	Note
TRACTIVE		Date 2017-12-29	Proj	Part Number 59170501
		Drawn by JT	Designed by JT	Scale 1:2
				Revision A

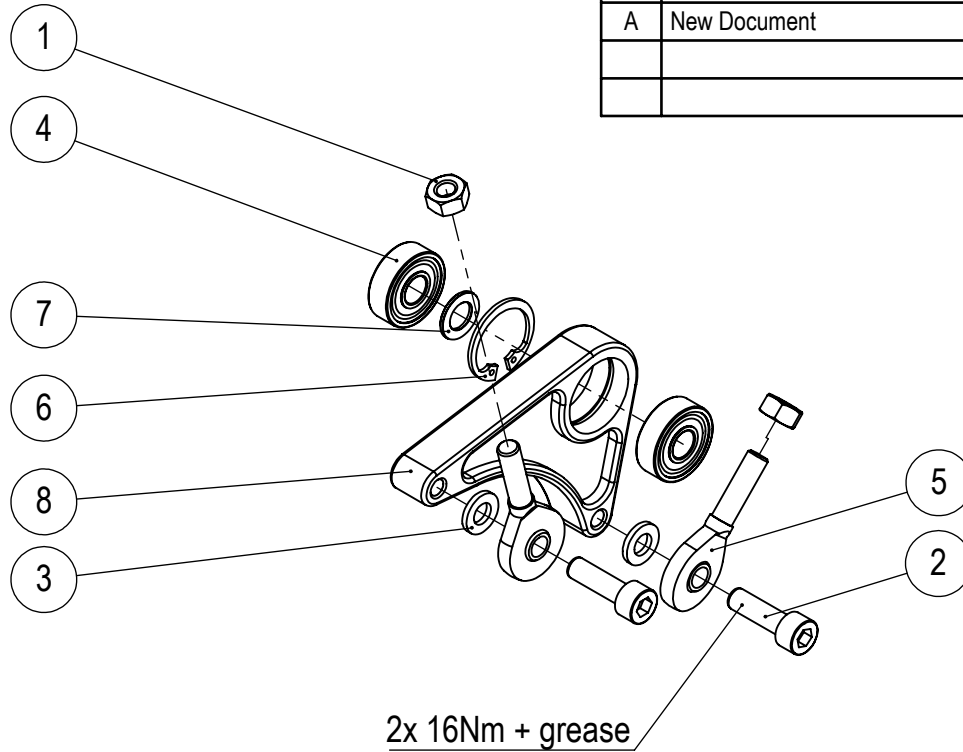
This drawing is the property of Tractive AB. Its submission does not include or carry the right to make, use or sell what is illustrated without the written consent of Tractive AB.

Tractive AB
 Gjutargatan 54 S-781 70 Borlänge
 Tel +46 243 22 11 55 www.tractive.se

Model: 59170401 Rev: A

Approved

Rev.	Note	Date	Rev. By	Appr. By
A	New Document	2018-01-09	JG	JG



Item	Qty.	Part No.	Description	Note
1	2	12070206	Nut M6, DIN934 FZB	
2	2	121006020-12.9FZ	Allen Screw DIN912 M6 x 20 12.9Z	
3	2	16400600	Plain washer 6.4 x 12 /M6	
4	2	20750608	Ball bearing 608-2RS1	
5	2	20901006	Uniball M6	
6	1	21402200	Circlip, DIN 471 22 x 1.2	
7	1	22110810	Support ring 8 x 14 x 1	
8	1	59170400	Bell crank RD	

Material		Description Bell crank assembly		
Geometric Tolerance	Sheet 1/1	Mass in Gram 124	Dim.in mm	Note
TRACTIVE		Date 2017-12-29	Proj	Part Number 59170401
		Drawn by JT	Designed by JT	Scale 1:2
				Revision A

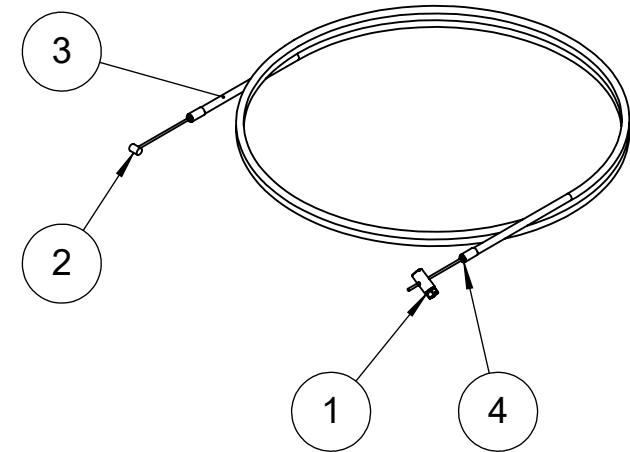
This drawing is the property of Tractive AB. Its submission does not include or carry the right to make, use or sell what is illustrated without the written consent of Tractive AB.

Tractive AB
 Gjutargatan 54 S-781 70 Borlänge
 Tel +46 243 22 11 55 www.tractive.se

Model: A5300006 Rev: B

Approved

Rev.	Note	Date	Rev. By	Appr. By
B	New Document	2020-09-15	JT	JT



Item	Qty.	Part No.	Description	Note
1	1	43700100	Nipple	
2	1	53030200	Inner cable	
3	1	53030300	Outer cable 2 meter	
4	2	53030400	Cable end	

Material		Description Unlock cable assembly		
Geometric Tolerance	Sheet 1/1	Mass in Gram 41	Dim.in mm	Note
TRACTIVE		Date	Proj	Part Number A5300006
		Drawn by	Designed by JT	Scale 1:5
				Revision B

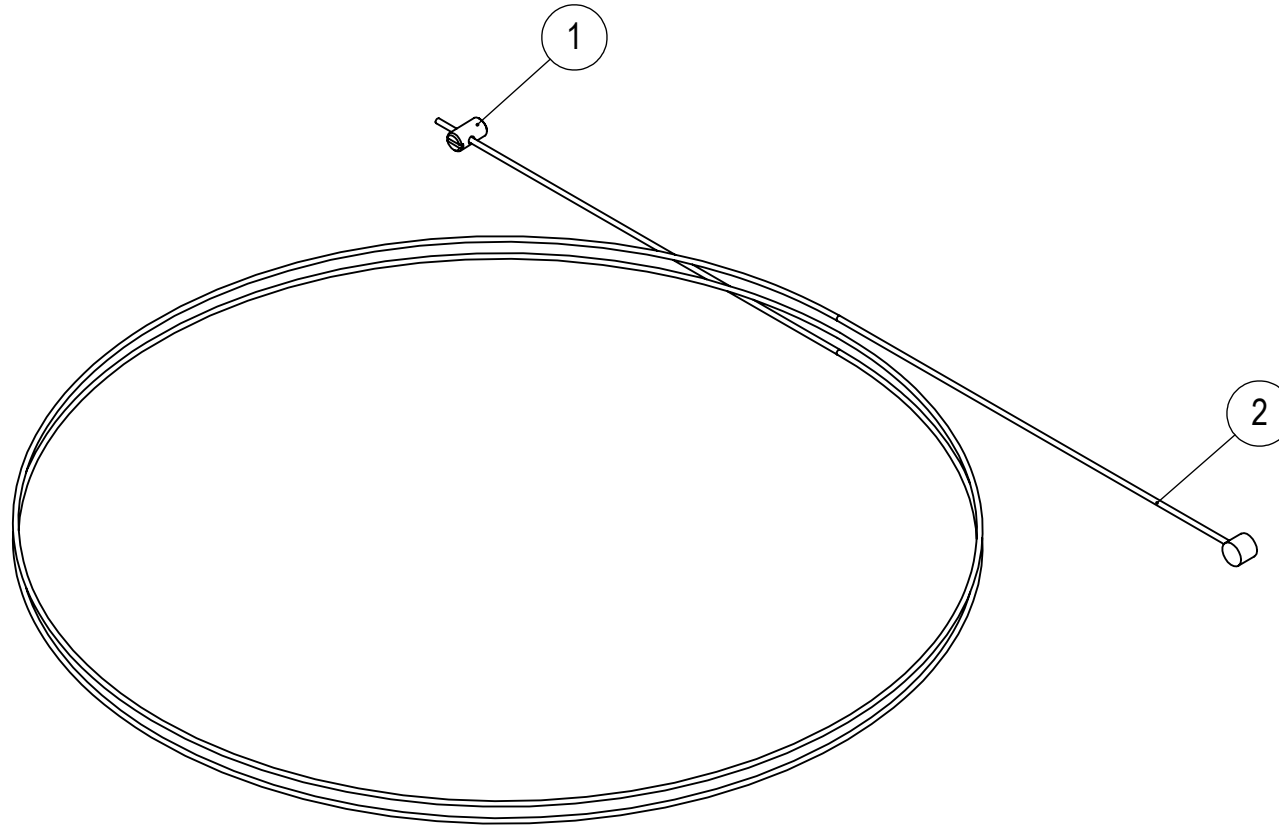
This drawing is the property of Tractive AB. Its submission does not include or carry the right to make, use or sell what is illustrated without the written consent of Tractive AB.

Tractive AB
 Giutargatan 54 S-781 70 Borlänge
 Tel +46 243 22 11 55 www.tractive.se

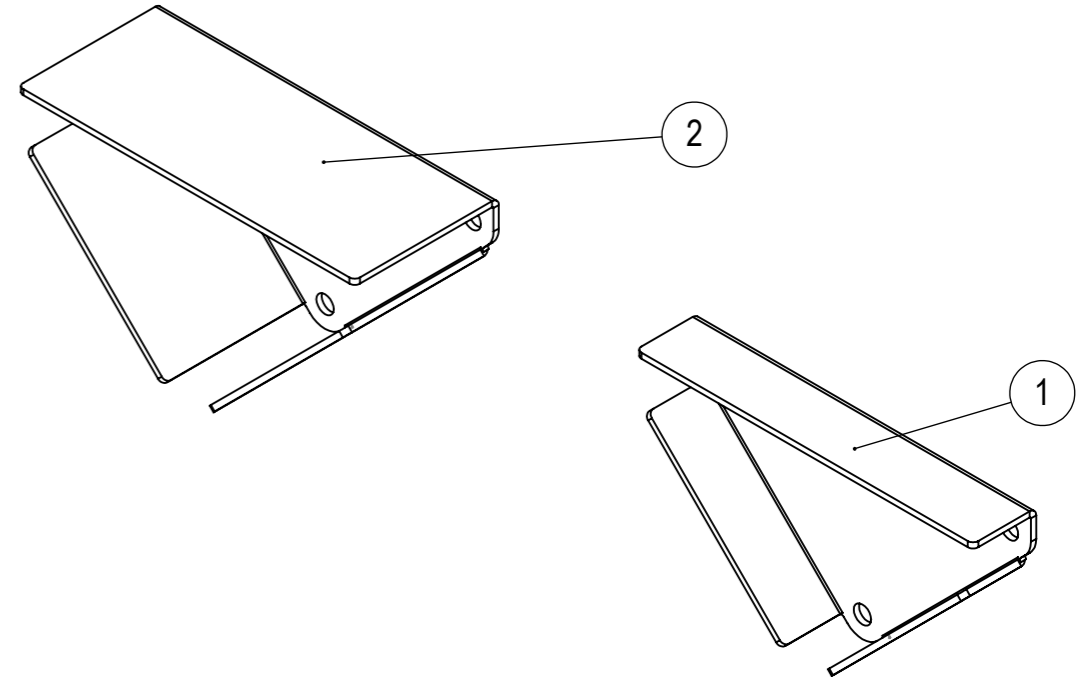
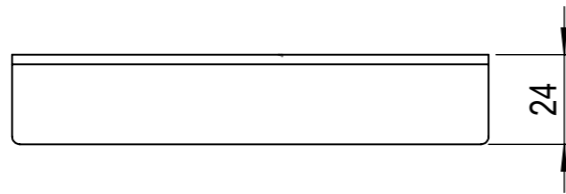
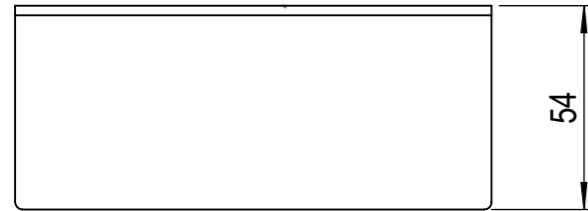
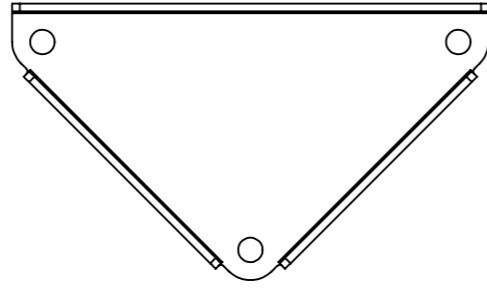
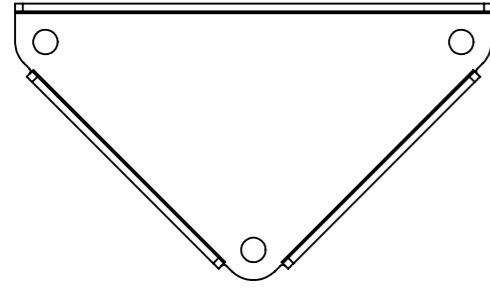
Model: A5300007 Rev: A

Approved

Rev.	Note	Date	Rev. By	Appr. By
A	New Document	2020-09-15	JT	JT



Item	Qty.	Part No.	Description	Note
1	1	43700200	Nipple	
2	1	53030600	Inner Cable	
Material			Description Unlock cable optional	
Geometric Tolerance		Sheet 1/1	Mass in Gram 0.01	Dim.in mm
TRACTIVE			Date 2018-11-30	Proj
			Part Number A5300007	Revision A
		Drawn by JT	Designed by JT	Scale 1:2



Rev.	Note	Date	Rev. By	Appr. By
A	New Document	2018-12-04	JT	JT

Item	Qty.	Part No.	Description	Note
1	1	59390800	Weld plate	Gear lever 24mm
2	1	59390900	Weld plate	Gear lever 54mm
Material		Description Weld plate options		
Geometric Tolerance		Sheet 1/1	Mass in Gram 489	Dim.in mm Note Gear lever
TRACTIVE		Date 2018-12-04	Proj	Part Number A5900020
		Drawn by JT	Designed by JT	
				Revision A